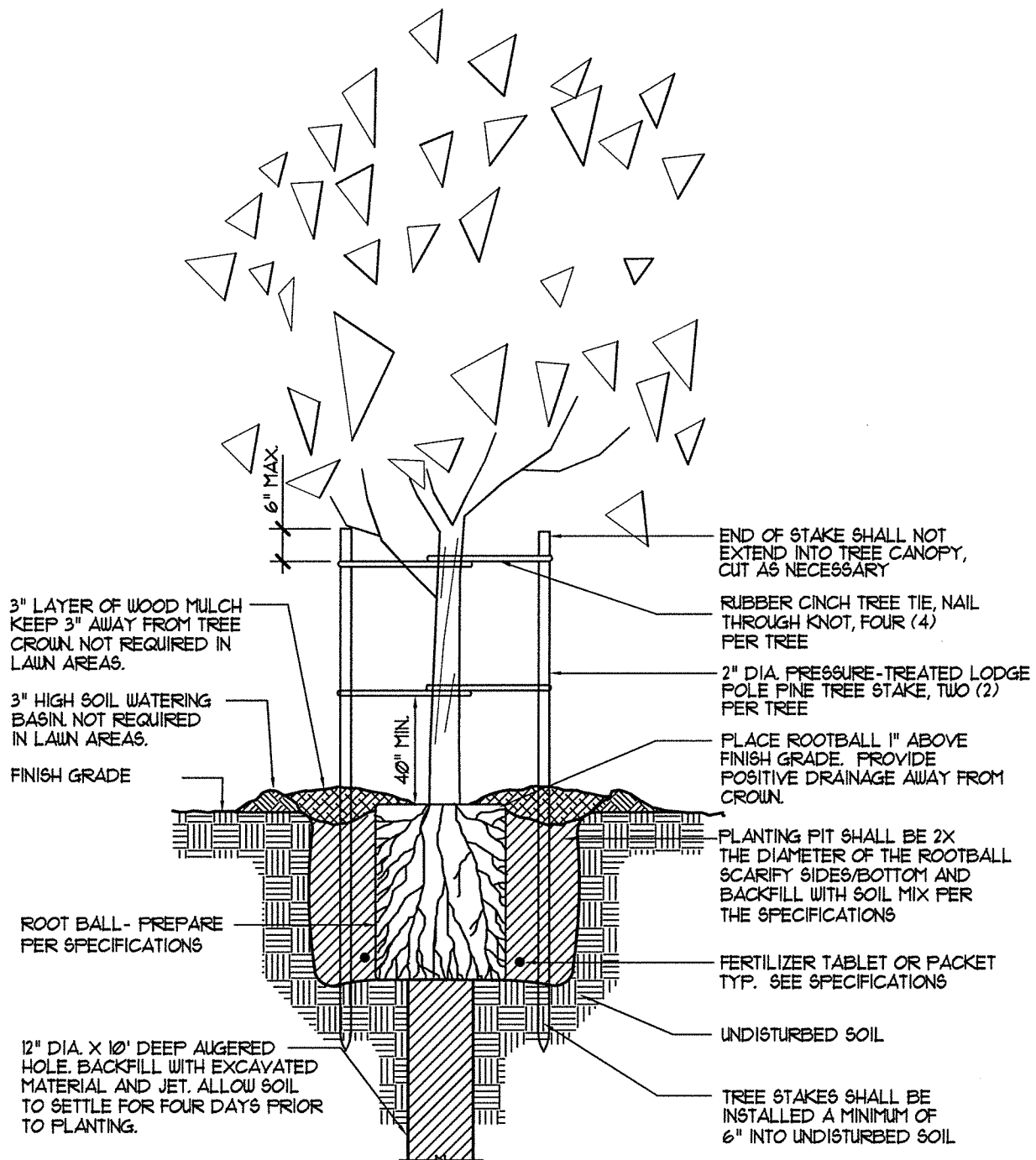


DRAWING NUMBER	TITLE
L-1	TREE PLANTING
L-2	SHRUB PLANTING
L-3	REMOTE CONTROL VALVE)
L-4	DRIP IRRIGATION VALVE ASSEMBLY
L-5	GATE VALVE
L-6	QUICK COUPLING VALVE
L-7	MASTER VALVE/FLOW SENSOR (BELOW GRADE)
L-7A	1-1/2" & 2" SIZE MASTER VALVE/FLOW SENSOR (ABOVE GRADE)
L-7B	3" SIZE AND LARGER MASTER VALVE/FLOW SENSOR (ABOVE GRADE)
L-8	FLUSH VALVE
L-9	AIR RELIEF VALVE
L-10	POP-UP ROTOR SPRINKLER
L-11	POP-UP SPRAY SPRINKLER
L-12	BUBBLER ON RISER
L-13	ROOT ZONE BUBBLER
L-14	DRIP IRRIGATION MULTI-OUTLET EMITTER
L-15	SUBSURFACE IN-LINE DRIP IRRIGATION LAYOUT
L-16	SUBSURFACE IN-LINE DRIP IRRIGATION CENTER-FEED SUPPLY MANIFOLD
L-17	SUBSURFACE IN-LINE DRIP IRRIGATION END-FEED SUPPLY MANIFOLD
L-18	DEEP WATERING PIPE FOR TREES
L-19	IRRIGATION CONTROLLER ENCLOSURE
L-20	IRRIGATION SYSTEM TRENCHING
L-21	VALVE BOX/PLANTING LAYOUT
L-22	DRINKING FOUNTAIN
L-23	POST AND CABLE FENCING
L-24	KNOCK-DOWN BOLLARD & STATIONARY BOLLARD
L-25	REMOVABLE BOLLARD
L-26	CONCRETE WALK
L-27	CONCRETE MOWSTRIP
L-28	BIKETRAIL PAVING SECTION
L-29	ROADWAY MEDIAN SECTION
L-30	REDWOOD HEADERBOARD
L-31	DOUBLE PIPE GATE
L-32	SINGLE PIPE GATE



NOTE:
 1. FOR 36" BOX TREES, STAKE WITH TWO 2" X 12' LONG SCHEDULE 40 GALVANIZED STEEL PIPES, PAINTED WITH TWO COATS OF DARK GREEN PAINT. TIE TREE WITH A METAL TWIST BRACE BOLTED TO THE STAKES OR OTHER APPROVED TREE TIE AS SPECIFIED.

[Signature]
 CHIEF, DEPT. OF TRANSPORTATION

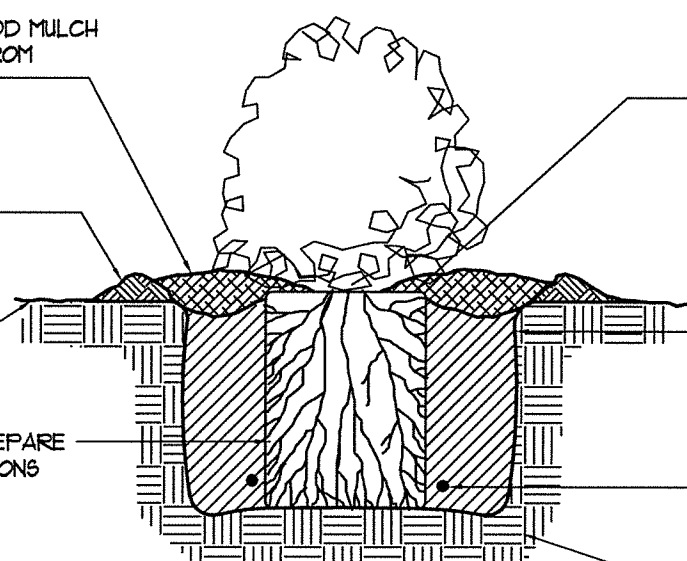
COUNTY OF SACRAMENTO MUNICIPAL SERVICES		
TREE PLANTING		
SCALE: NONE DATE: 11/2013	DRAWN BY: GMM/HY CHECKED BY: HY	SHEET: L-1

3" LAYER OF WOOD MULCH
KEEP 3" AWAY FROM
SHRUB CROWN

3" HIGH SOIL
WATERING BASIN

FINISH GRADE

ROOT BALL - PREPARE
PER SPECIFICATIONS



PLACE ROOTBALL 1" ABOVE
FINISHED GRADE. PROVIDE
POSITIVE DRAINAGE AWAY
FROM CROWN.

PLANTING PIT SHALL BE 2X
THE DIAMETER OF THE ROOTBALL
SCARIFY SIDES/BOTTOM AND
BACKFILL WITH SOIL MIX PER
THE SPECIFICATIONS

FERTILIZER TABLET OR PACKET
TYP. SEE SPECIFICATIONS

UNDISTURBED SOIL

CHIEF, DEPT. OF TRANSPORTATION

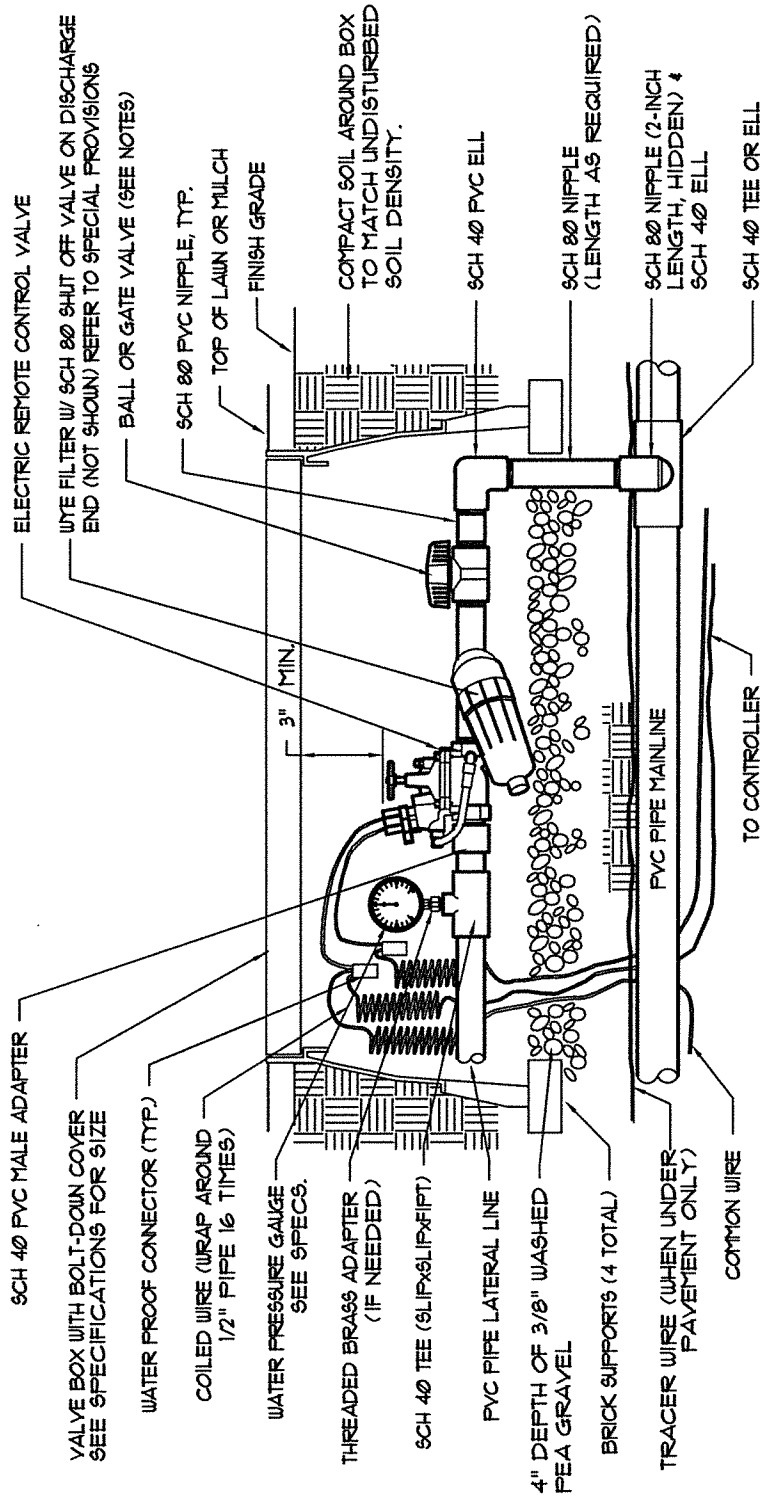
COUNTY OF SACRAMENTO
MUNICIPAL SERVICES

SHRUB PLANTING

SCALE: NONE
DATE: 11/2013

DRAWN BY: GMM/HY
CHECKED BY: HY

SHEET:
L-2



NOTES:

1. ALL WIRE SHALL BE TAPED AND BUNDLED EVERY TEN FEET AND SHALL BE INSTALLED IN COMPLIANCE WITH LOCAL CODE.
2. ONE SPARE WIRE (NOT SHOWN) SHALL BE PULLED TO EACH VALVE AND COILED IN BOX.
3. SHUT-OFF VALVES 3" AND SMALLER SHALL BE SCH 80 BALL VALVES. VALVES LARGER THAN 3" SHALL BE BRASS GATE VALVES.

COUNTY OF SACRAMENTO
MUNICIPAL SERVICES AGENCY

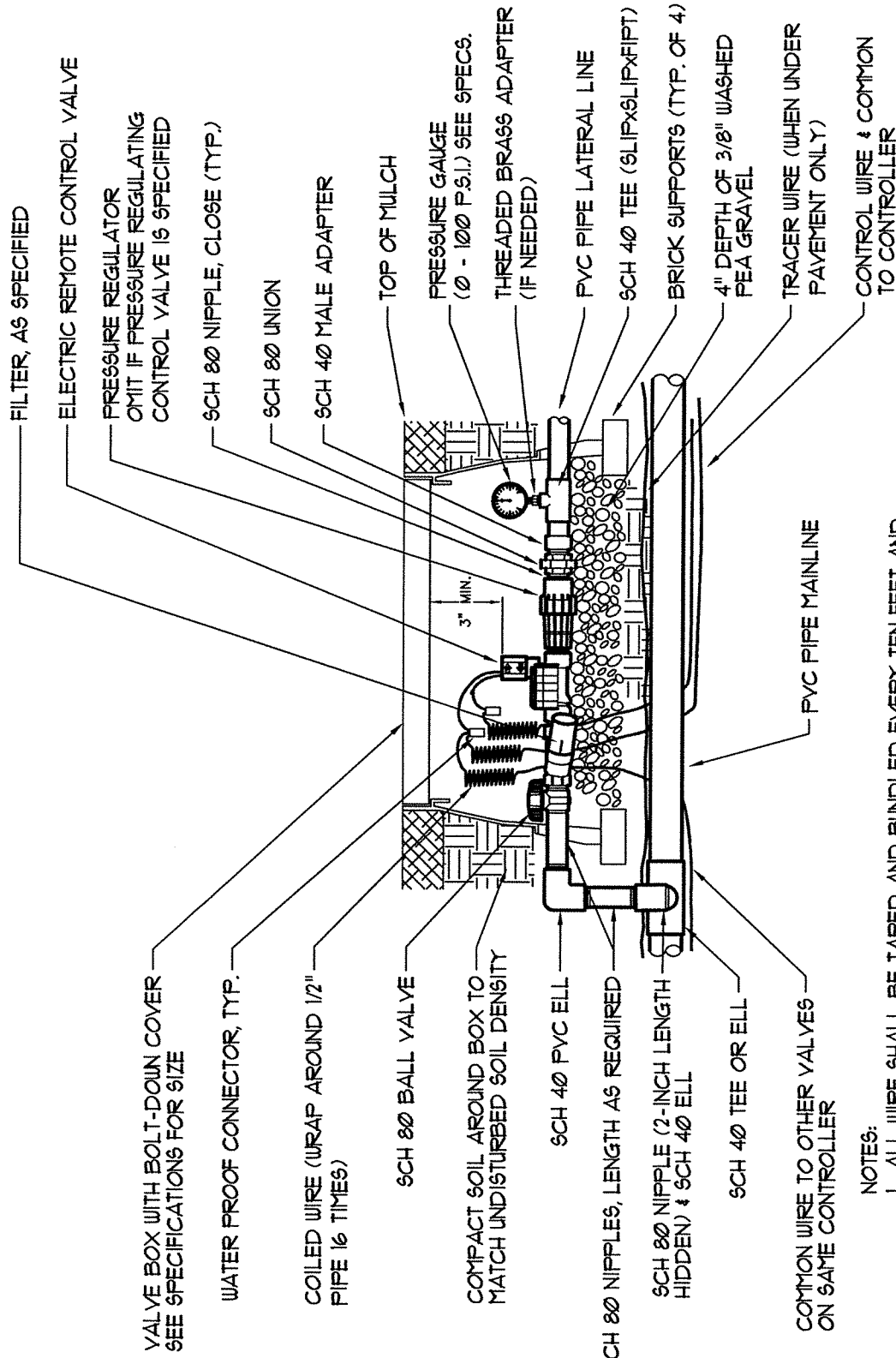
REMOTE CONTROL VALVE

SCALE: NONE
DATE: 11/2013

DRAWN BY: GMM/HY
CHECKED BY: HY

SHEET:
L-3

[Signature]
CHIEF, DEPT. OF TRANSPORTATION



FILTER, AS SPECIFIED

ELECTRIC REMOTE CONTROL VALVE

PRESSURE REGULATOR
OMIT IF PRESSURE REGULATING
CONTROL VALVE IS SPECIFIED

SCH 80 NIPPLE, CLOSE (TYP.)

SCH 80 UNION

SCH 40 MALE ADAPTER

TOP OF MULCH

PRESSURE GAUGE
(Ø - 100 P.S.I.) SEE SPECS.

THREADED BRASS ADAPTER
(IF NEEDED)

PVC PIPE LATERAL LINE

SCH 40 TEE (SLIPXSLIPXFIPT)

BRICK SUPPORTS (TYP. OF 4)

4" DEPTH OF 3/8" WASHED
PEA GRAVEL

TRACER WIRE (WHEN UNDER
PAVEMENT ONLY)

CONTROL WIRE & COMMON
TO CONTROLLER

VALVE BOX WITH BOLT-DOWN COVER
SEE SPECIFICATIONS FOR SIZE

WATER PROOF CONNECTOR, TYP.

COILED WIRE (WRAP AROUND 1/2"
PIPE 16 TIMES)

SCH 80 BALL VALVE

COMPACT SOIL AROUND BOX TO
MATCH UNDISTURBED SOIL DENSITY

SCH 40 PVC ELL

SCH 80 NIPPLES, LENGTH AS REQUIRED

SCH 80 NIPPLE (2-INCH LENGTH
HIDDEN) & SCH 40 ELL

SCH 40 TEE OR ELL

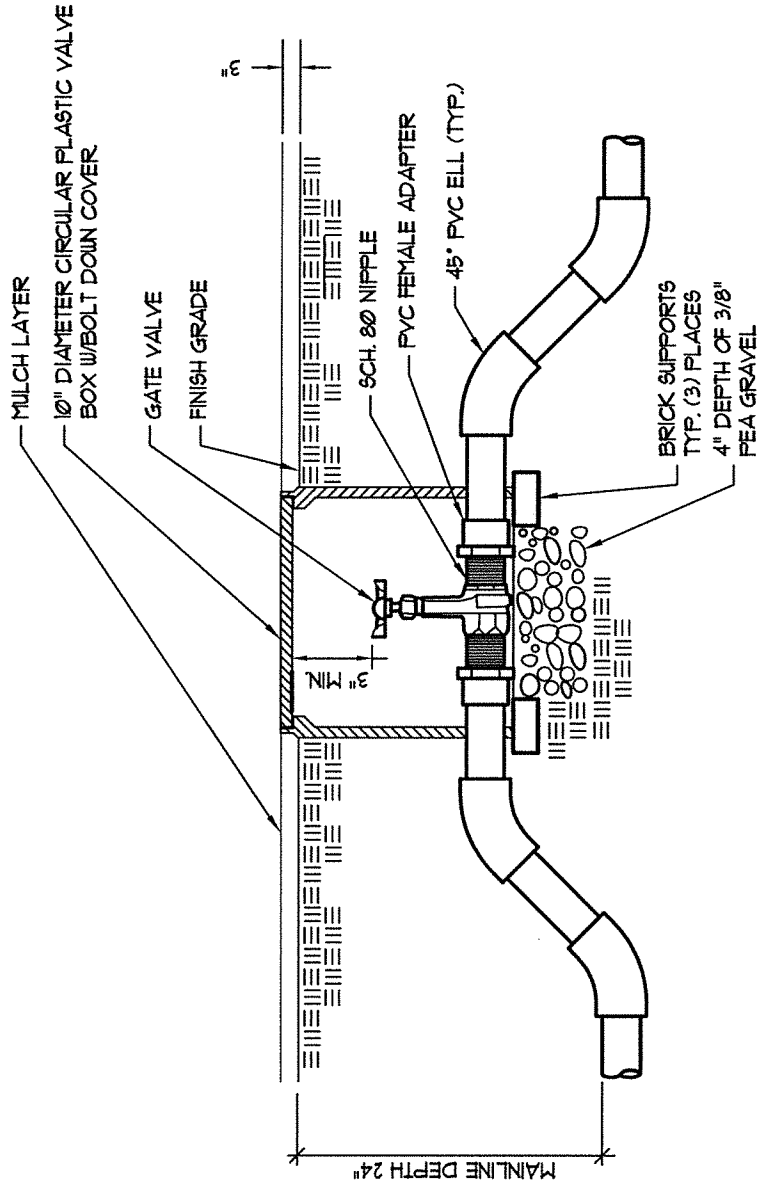
COMMON WIRE TO OTHER VALVES
ON SAME CONTROLLER

PVC PIPE MAINLINE

NOTES:
1. ALL WIRE SHALL BE TAPED AND BUNDLED EVERY TEN FEET AND
SHALL BE INSTALLED AS PER LOCAL CODE.

COUNTY OF SACRAMENTO MUNICIPAL SERVICES		SHEET: L-4
DRIP IRRIGATION VALVE ASSEMBLY		
SCALE: NONE	DRAWN BY: GMM/HY	CHECKED BY: HY
DATE: 11/2013		

[Signature]
CHIEF, DEPT. OF TRANSPORTATION



COUNTY OF SACRAMENTO
MUNICIPAL SERVICES

GATE VALVE

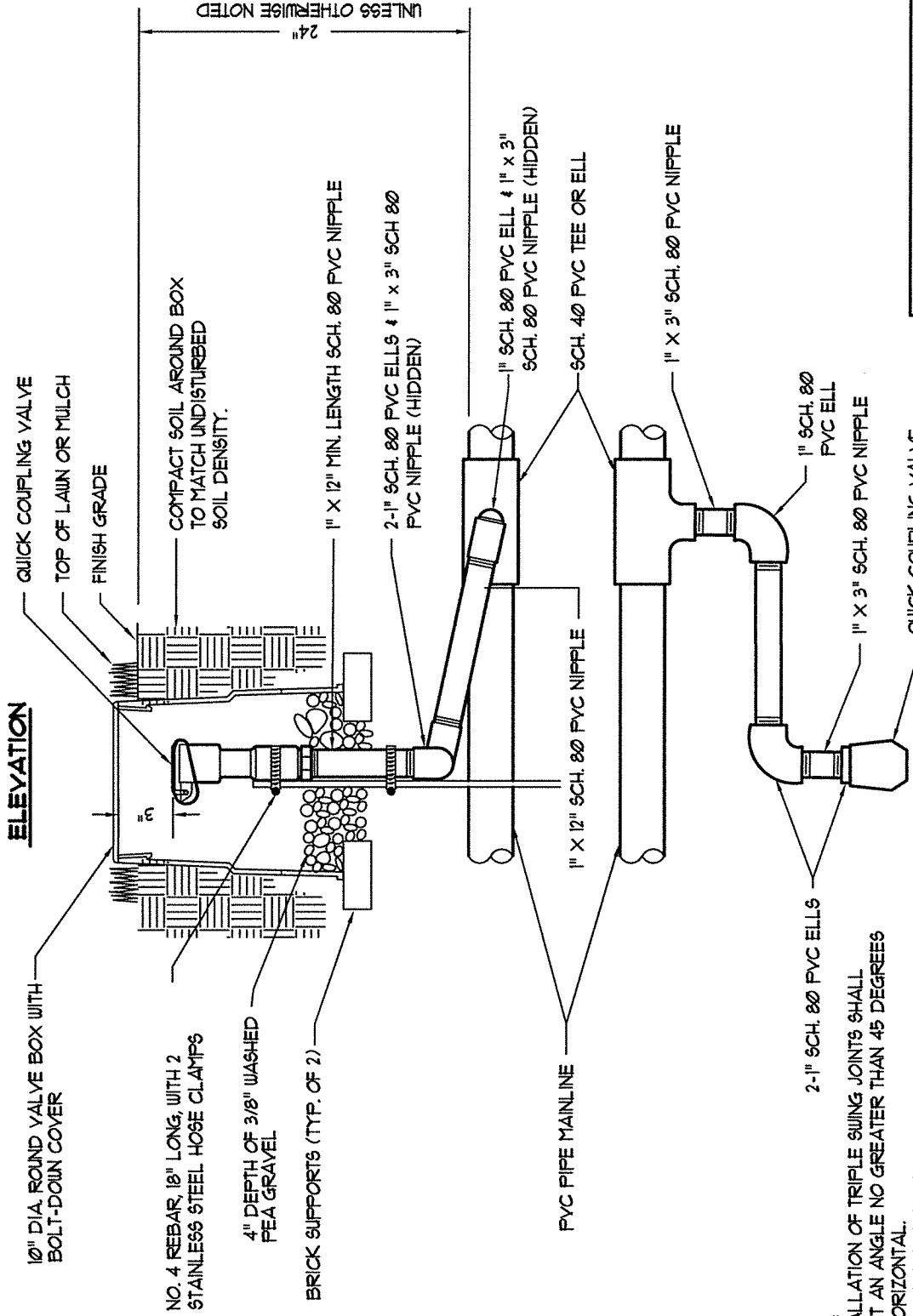
SCALE: NONE
DATE: 11/2013

DRAWN BY: SB
CHECKED BY: HY

SHEET:
L-5

CHIEF, DEPT. OF TRANSPORTATION

ELEVATION



NOTES:
 1. INSTALLATION OF TRIPLE SWING JOINTS SHALL BE AT AN ANGLE NO GREATER THAN 45 DEGREES TO HORIZONTAL.
 2. ALL PRE-MANUFACTURED TRIPLE SWING JOINTS SHALL BE MANUFACTURED WITH O-RINGS AND SHALL BE RATED AT 200 PSI.

PLAN VIEW

COUNTY OF SACRAMENTO MUNICIPAL SERVICES	
QUICK COUPLING VALVE	
SCALE: NONE	DRAWN BY: GMM
DATE: 11/2013	CHECKED BY: HY
	SHEET: L-6


 CHIEF, DEPT. OF TRANSPORTATION

VALVE BOX WITH BOLT-DOWN COVER.
SEE SPECIFICATIONS FOR SIZE

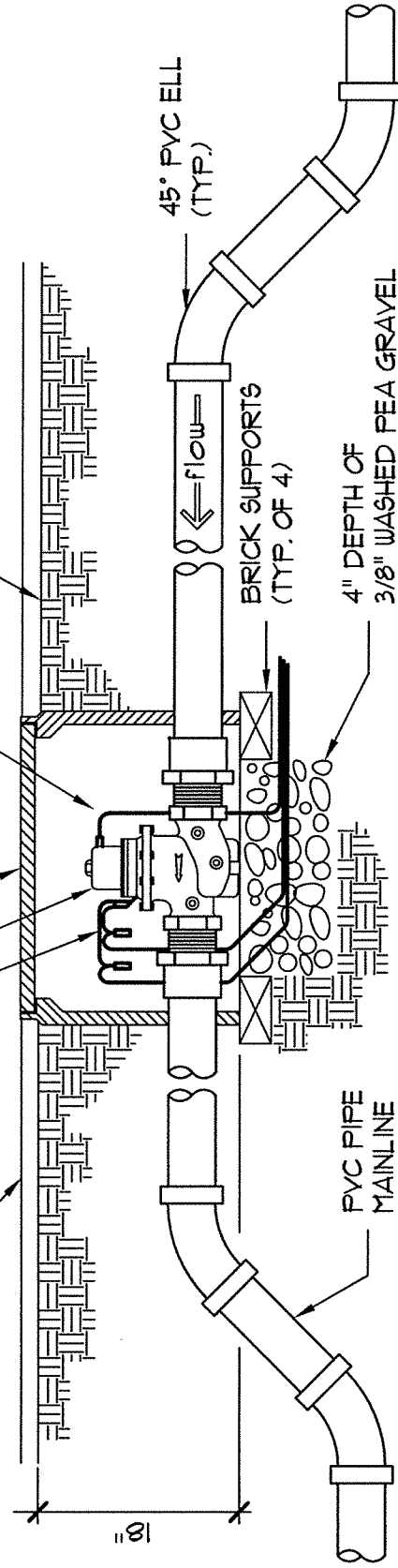
FLOW SENSOR/MASTER VALVE

3- #14 MASTER VALVE SOLENOID WIRES
TO CONTROLLER INSTALL AS PER
MANUFACTURER'S SPECIFICATIONS. COIL
WIRE (WRAP AROUND 1/2" PIPE 16 TIMES)

2- #14 FLOW SENSOR WIRES TO CONTROLLER
INSTALL AS PER MANUFACTURER'S
SPECIFICATIONS.
COIL WIRE (WRAP AROUND 1/2" PIPE
16 TIMES)

MULCH LAYER

FINISH GRADE

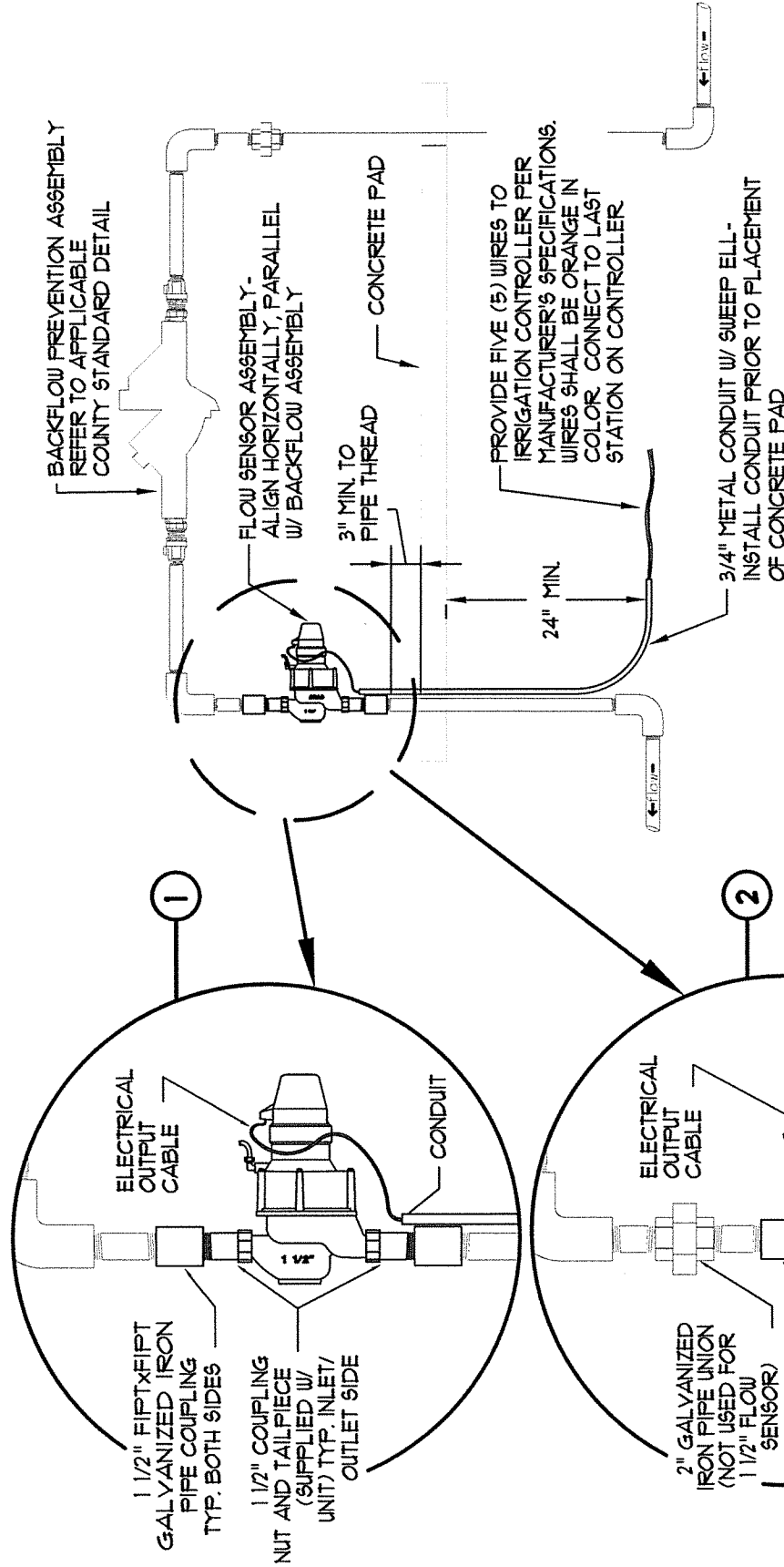


COUNTY OF SACRAMENTO
MUNICIPAL SERVICES

MASTER VALVE/
FLOW SENSOR
(BELOW GRADE)

SCALE: NONE
DATE: 11/2013
DRAWN BY: GA
CHECKED BY: HY
SHEET:
L-7

[Signature]
CHIEF, DEPT. OF TRANSPORTATION



BACKFLOW PREVENTION ASSEMBLY REFER TO APPLICABLE COUNTY STANDARD DETAIL

FLOW SENSOR ASSEMBLY - ALIGN HORIZONTALLY, PARALLEL W/ BACKFLOW ASSEMBLY

3" MIN. TO PIPE THREAD

CONCRETE PAD

PROVIDE FIVE (5) WIRES TO IRRIGATION CONTROLLER PER MANUFACTURER'S SPECIFICATIONS. WIRES SHALL BE ORANGE IN COLOR. CONNECT TO LAST STATION ON CONTROLLER

24" MIN.

3/4" METAL CONDUIT W/ SWEEP ELL - INSTALL CONDUIT PRIOR TO PLACEMENT OF CONCRETE PAD

NOTE:

- ① 1 1/2" FLOW SENSOR FOR FLOW RATES 66 - 66 GPM.
- ② 2" FLOW SENSOR FOR FLOW RATES 88 - 110 GPM.
- ③ COIL WIRE ADJACENT TO FLOW SENSOR (WRAP AROUND 1/2" PIPE 16 TIMES) FOR SLACK, TYP. FOR EITHER FLOW SENSOR.
- ④ FLOW SENSOR SPECIFICATION IN ACCORDANCE WITH IRRIGATION PLAN

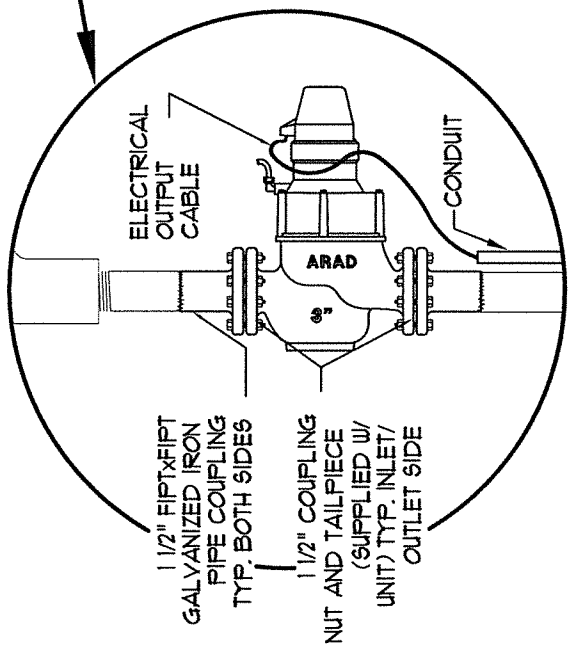
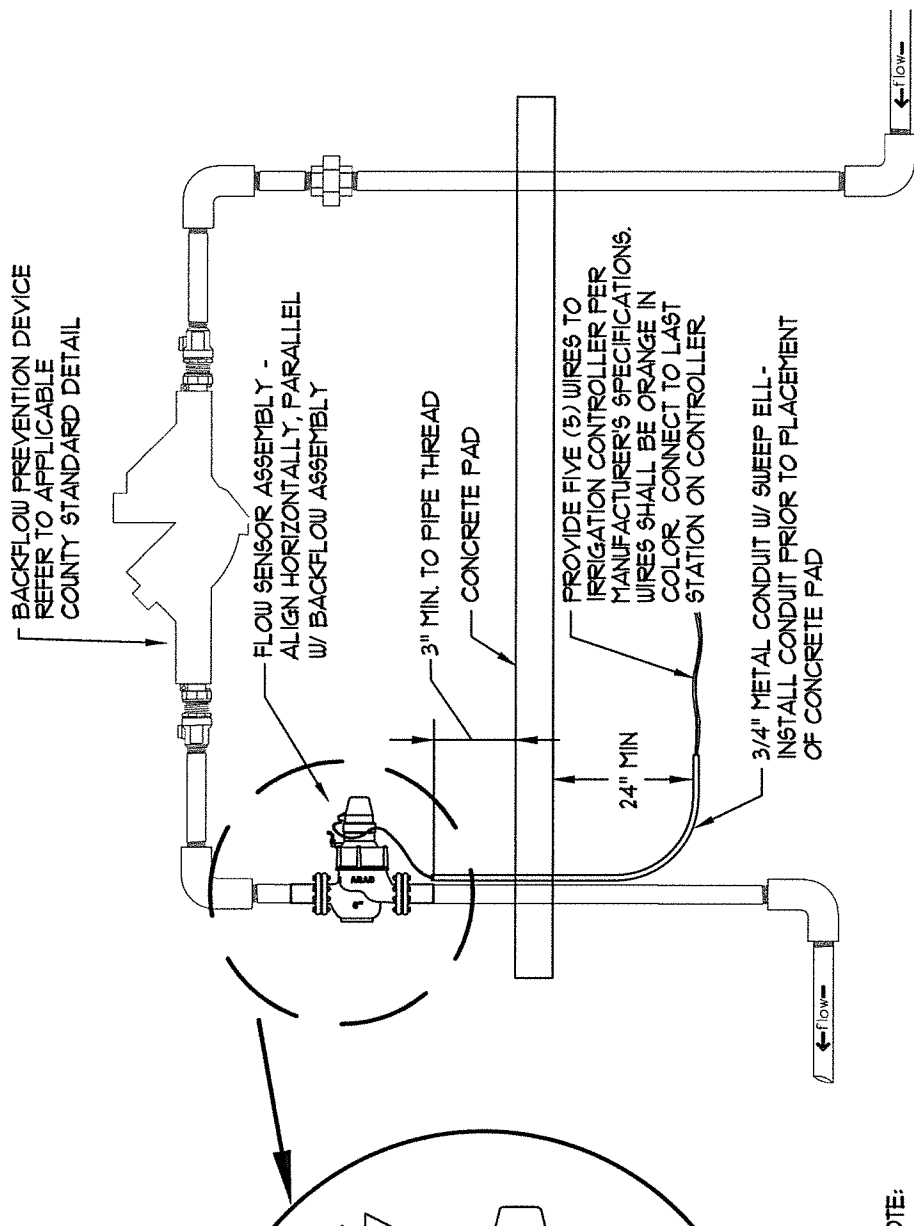
COUNTY OF SACRAMENTO
MUNICIPAL SERVICES

1-1/2" & 2" SIZE
MASTER VALVE/FLOW SENSOR
(ABOVE GRADE)

SCALE: NONE
DATE: 12/2007
DRAWN BY: SF/HY
CHECKED BY: HY

SHEET:
L-7A


CHIEF, DEPT. OF TRANSPORTATION

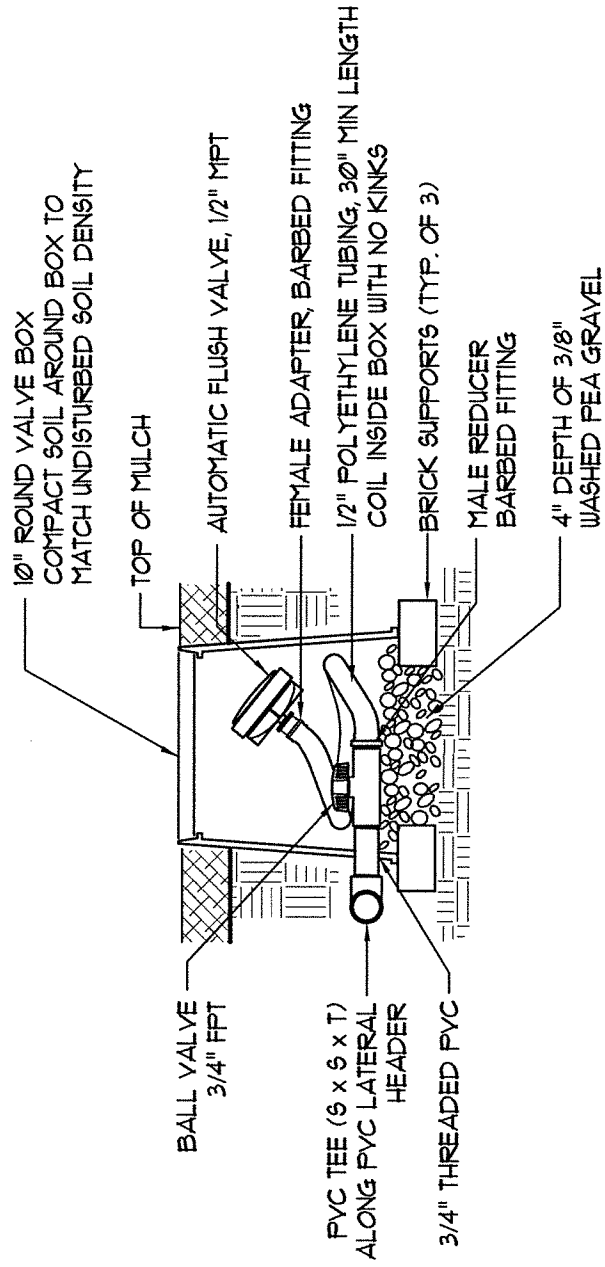


NOTE:

- ① COIL WIRE ADJACENT TO FLOW SENSOR (WRAP AROUND 1/2" PIPE 16 TIMES) FOR SLACK, TYP.
- ② FLOW SENSOR SPECIFICATION IN ACCORDANCE WITH IRRIGATION PLAN

COUNTY OF SACRAMENTO MUNICIPAL SERVICES	
3" SIZE AND LARGER MASTER VALVE/FLOW SENSOR (ABOVE GRADE)	
SCALE: NONE	DRAWN BY: SF/HY
DATE: 12/2007	CHECKED BY: HY
	SHEET: L-7B


 CHIEF, DEPT. OF TRANSPORTATION



COUNTY OF SACRAMENTO
MUNICIPAL SERVICES

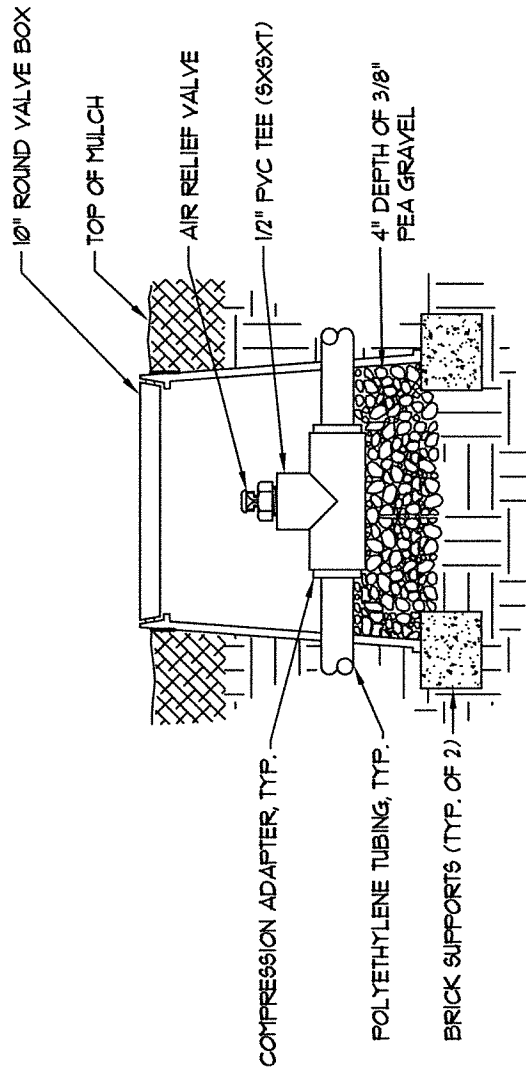
FLUSH VALVE

SCALE: NONE
DATE: 11/2013

DRAWN BY: HY
CHECKED BY: HY

SHEET:
L-8

CHIEF, DEPT. OF TRANSPORTATION



NOTE:
 1. AIR RELIEF VALVE SHALL BE INSTALLED AT THE HIGHEST POINT OF THE SYSTEM, ABOVE ALL DRIPLINE LATERALS.

[Signature]
 CHIEF, DEPT. OF TRANSPORTATION

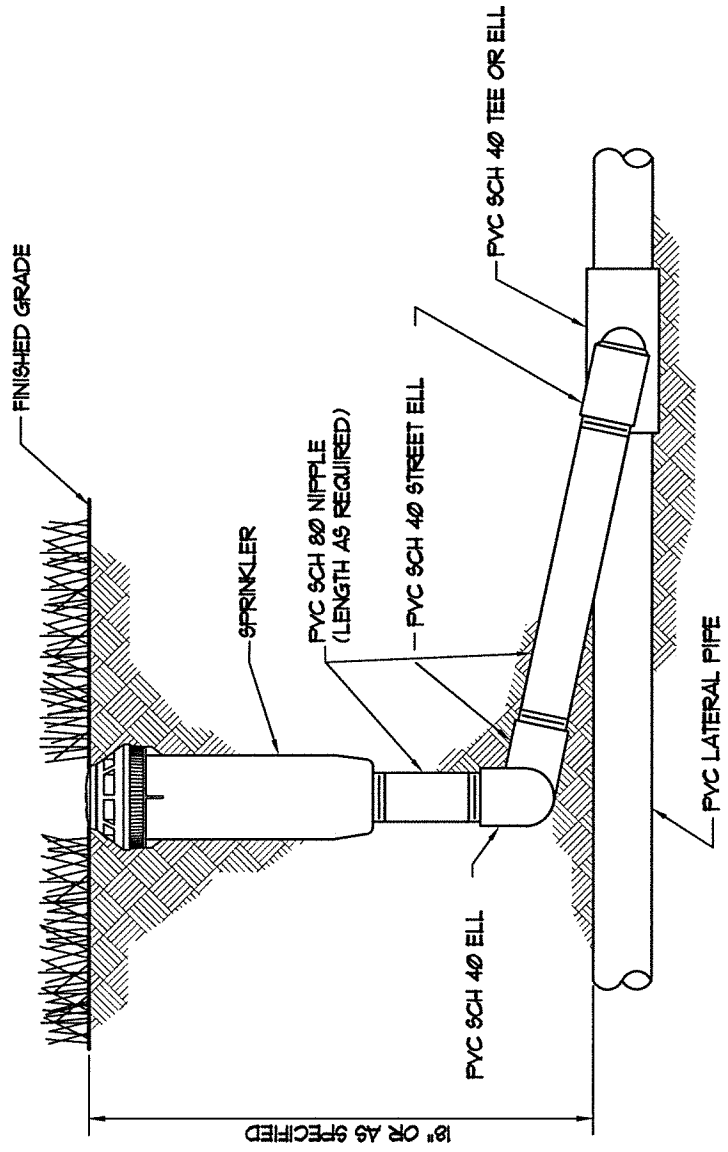
COUNTY OF SACRAMENTO
 MUNICIPAL SERVICES

AIR RELIEF VALVE

SCALE: NONE
 DATE: 11/2013

DRAWN BY: GMM/HY
 CHECKED BY: HY

SHEET:
L-9



NOTES:

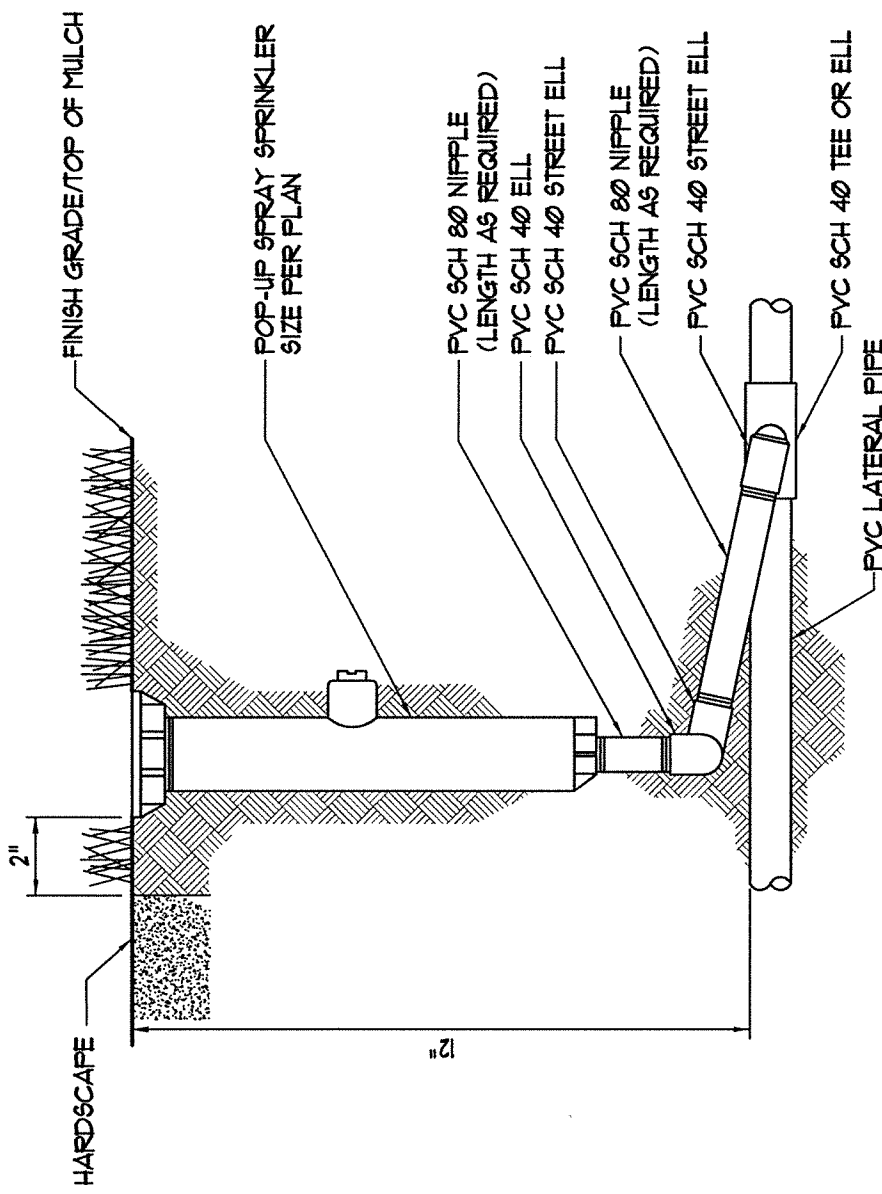
1. INSTALLATION OF TRIPLE SWING JOINTS SHALL BE AT AN ANGLE NO GREATER THAN 45 DEGREES TO HORIZONTAL.
2. ALL PRE-MANUFACTURED TRIPLE SWING JOINTS SHALL BE MANUFACTURED WITH O-RINGS AND SHALL BE RATED AT 200 PSI.

COUNTY OF SACRAMENTO
MUNICIPAL SERVICES

POP-UP ROTOR SPRINKLER

SCALE: NONE	DRAWN BY: TRU P.	SHEET: L-10
DATE: 11/2000	CHECKED BY: GMM	

CHIEF, DEPT. OF TRANSPORTATION



NOTES:

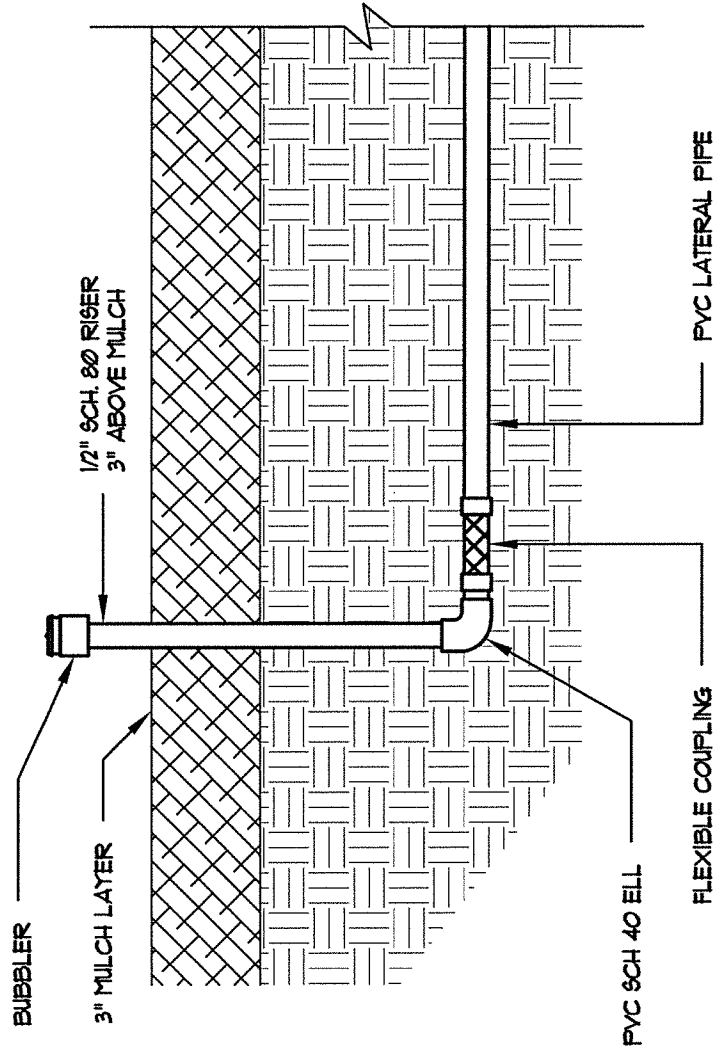
1. INSTALLATION OF TRIPLE SWING JOINTS SHALL BE AT AN ANGLE NO GREATER THAN 45 DEGREES TO HORIZONTAL.
2. ALL PRE-MANUFACTURED TRIPLE SWING JOINTS SHALL BE MANUFACTURED WITH O-RINGS AND SHALL BE RATED AT 200 PSI.

COUNTY OF SACRAMENTO
MUNICIPAL SERVICES


POP-UP SPRAY SPRINKLER

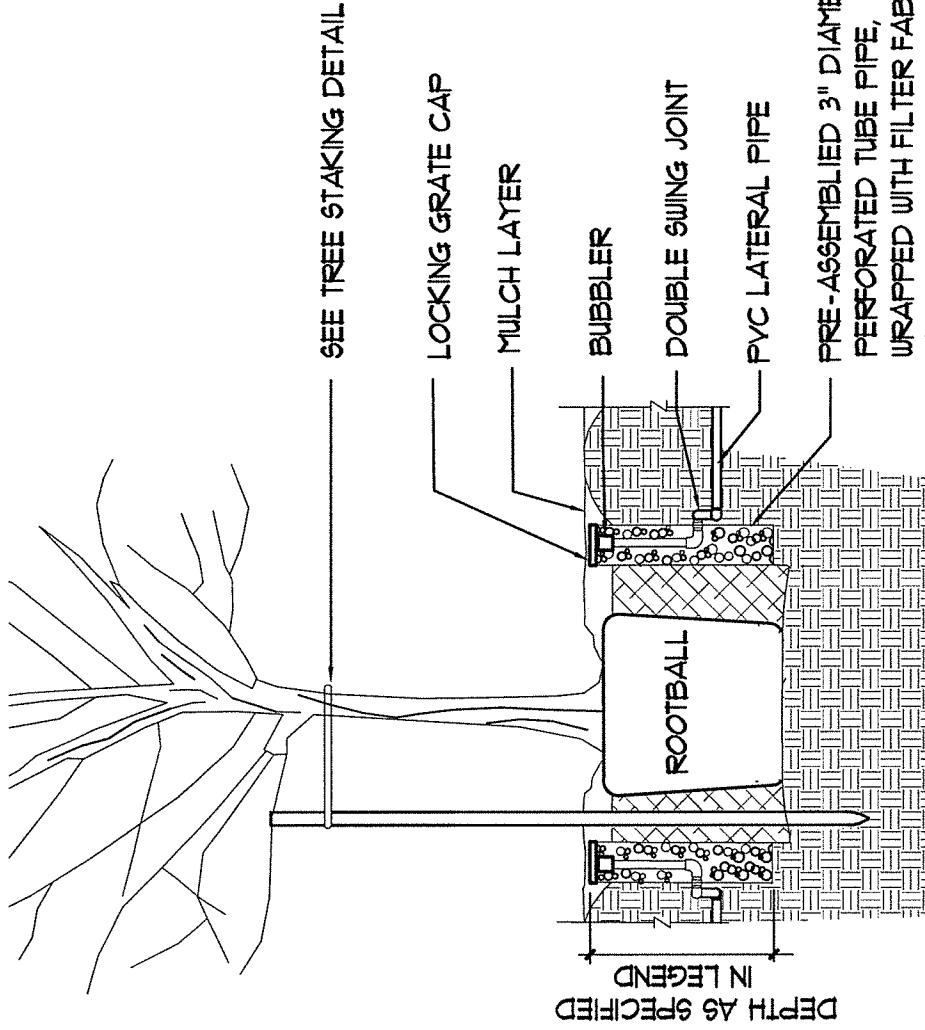
SCALE: NONE	DRAWN BY: TRU P.	SHEET: L-11
DATE: 11/2000	CHECKED BY: GMM	

[Signature]
CHIEF, DEPT. OF TRANSPORTATION



COUNTY OF SACRAMENTO MUNICIPAL SERVICES		SHEET: L-12
SCALE: NONE	DRAWN BY: G.A.	CHECKED BY: GMM
BUBBLER ON RISER		DATE: 11/2000


 CHIEF, DEPT. OF TRANSPORTATION



SEE TREE STAKING DETAIL

LOCKING GRATE CAP

MULCH LAYER

BUBBLER

DOUBLE SWING JOINT

PVC LATERAL PIPE

PRE-ASSEMBLED 3" DIAMETER PERFORATED TUBE PIPE, WRAPPED WITH FILTER FABRIC SLEEVE. FILL PIPE WITH PEA GRAVEL.

DEPTH AS SPECIFIED IN LEGEND

ROOTBALL

INSTALL BUBBLERS NEAR EDGE OF ROOT BALL, WITHIN TREE WATERING BASIN.

COUNTY OF SACRAMENTO
MUNICIPAL SERVICES

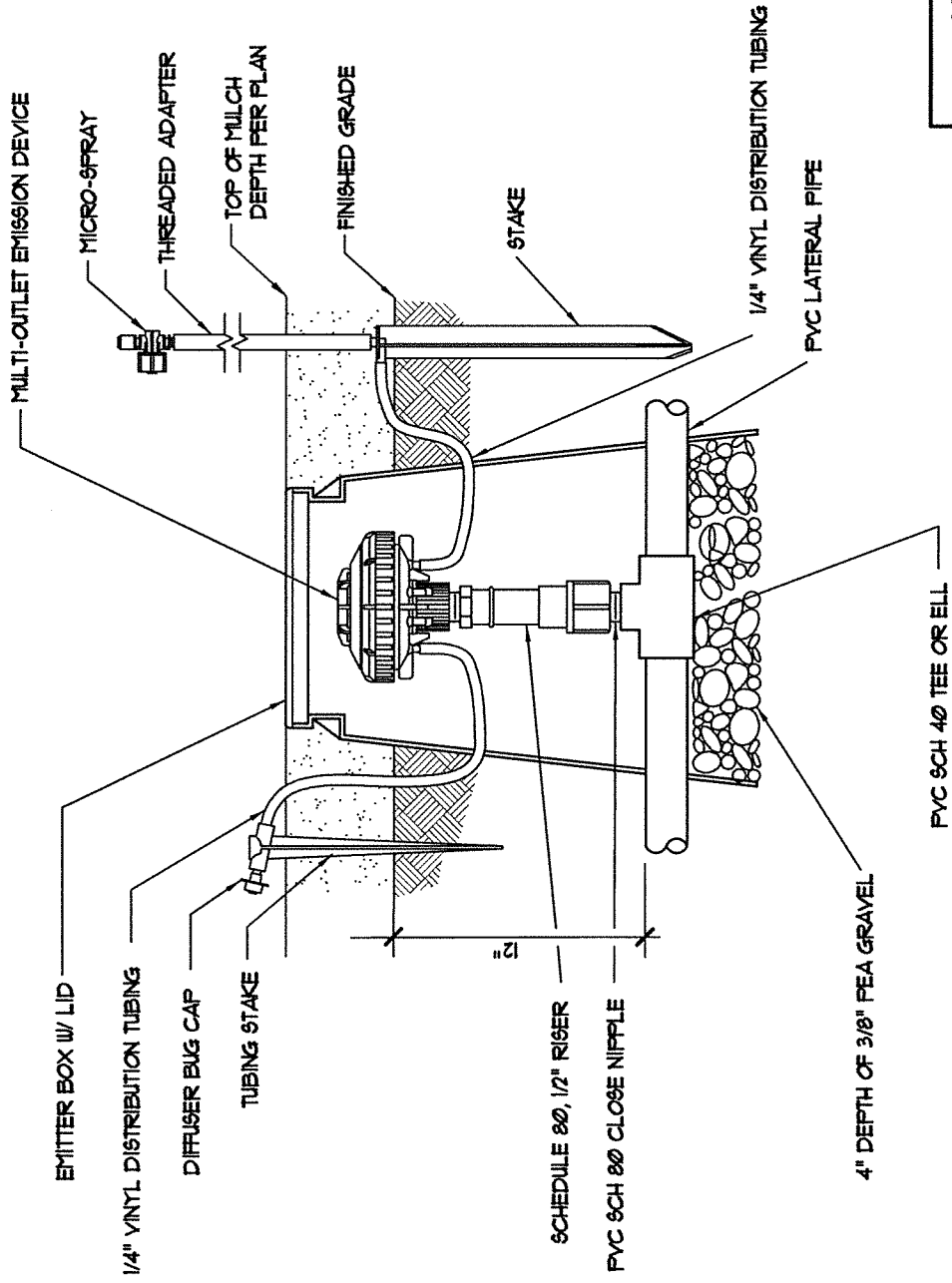
ROOT ZONE BUBBLER

SCALE: NONE
DATE: 11/2013


DRAWN BY: HY
CHECKED BY: HY

SHEET:
L-13

[Signature]
CHIEF, DEPT. OF TRANSPORTATION



COUNTY OF SACRAMENTO MUNICIPAL SERVICES		SCALE: NONE	DRAWN BY: TP/HY	SHEET: L-14
DRIP IRRIGATION MULTI-OUTLET EMITTER		DATE: 11/2013	CHECKED BY: HY	


 CHIEF, DEPT. OF TRANSPORTATION

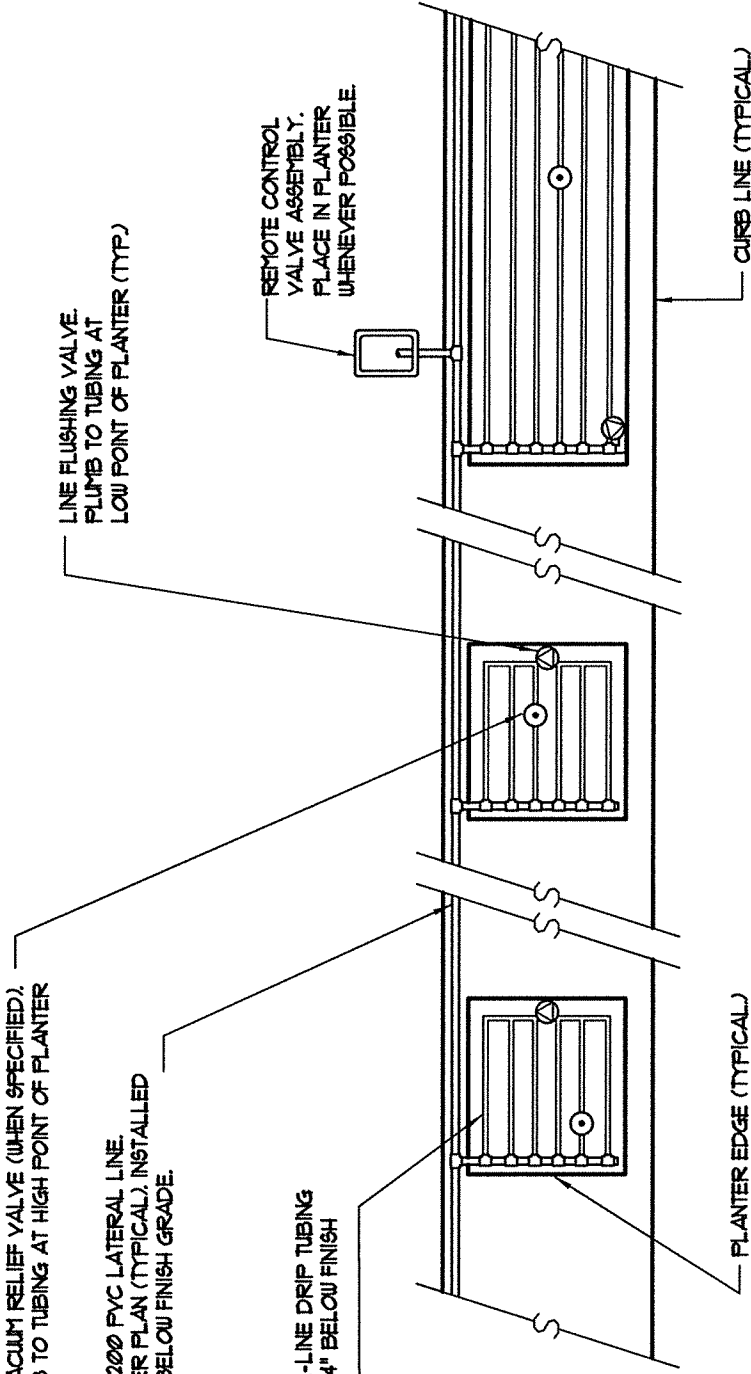
AIR/VACUUM RELIEF VALVE (WHEN SPECIFIED),
FLUMB TO TUBING AT HIGH POINT OF PLANTER

CLASS 200 PVC LATERAL LINE,
SIZE PER PLAN (TYPICAL), INSTALLED
AT 12" BELOW FINISH GRADE

SUBSURFACE IN-LINE DRIP TUBING
INSTALLED AT 4" BELOW FINISH
GRADE

LINE FLUSHING VALVE,
FLUMB TO TUBING AT
LOW POINT OF PLANTER (TYP.)

REMOTE CONTROL
VALVE ASSEMBLY,
PLACE IN PLANTER
WHENEVER POSSIBLE



PLANTER EDGE (TYPICAL)

CURB LINE (TYPICAL)

NOTE: ALL DRIP TUBING FITTINGS SHALL BE BARBED.

COUNTY OF SACRAMENTO
MUNICIPAL SERVICES

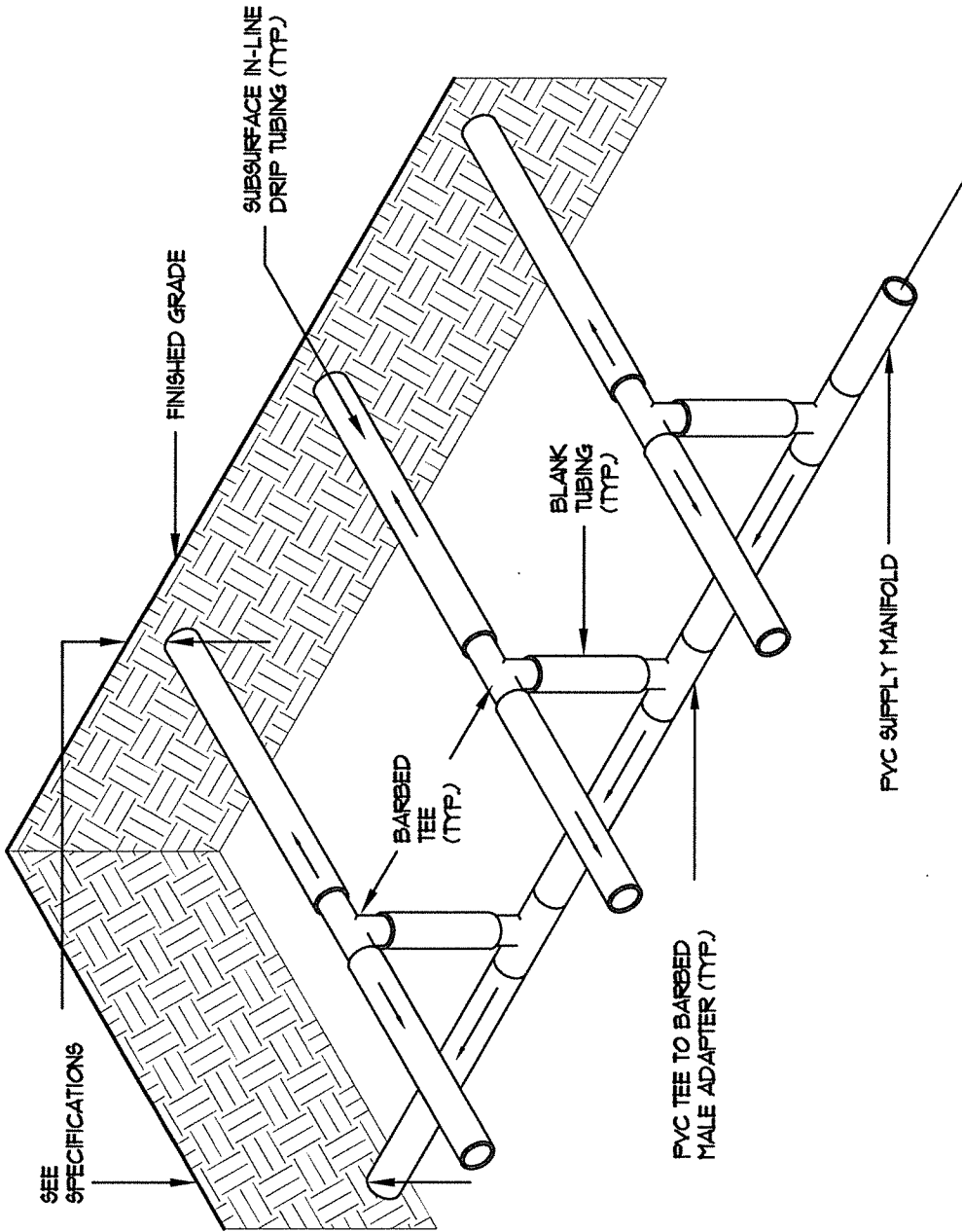
SUBSURFACE IN-LINE DRIP IRRIGATION LAYOUT

SCALE: NONE
DATE: 11/2013

DRAWN BY: TRU P.
CHECKED BY: HY

SHEET:
L-15

[Signature]
CHIEF, DEPT. OF TRANSPORTATION



COUNTY OF SACRAMENTO
MUNICIPAL SERVICES

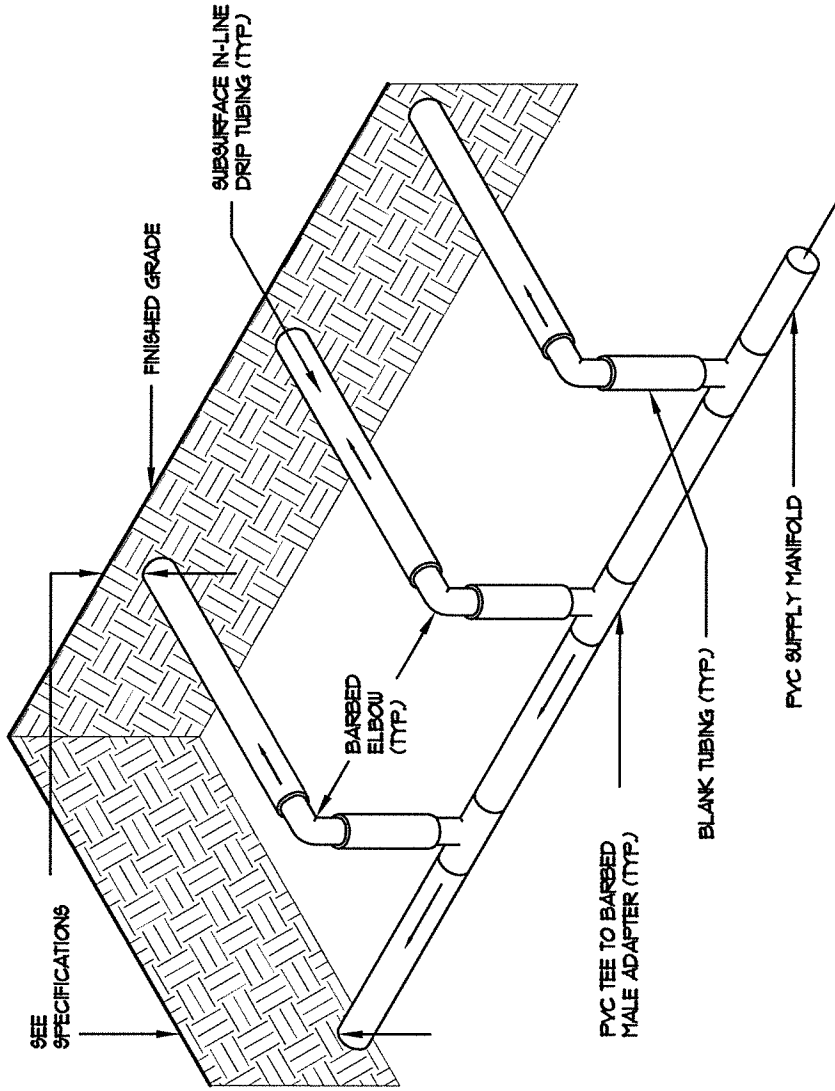
**SUBSURFACE IN-LINE DRIP
IRRIGATION CENTER-FEED
SUPPLY MANIFOLD**

SCALE: NONE
DATE: 11/2000

DRAWN BY: G.A.
CHECKED BY: GMM

SHEET:
L-16

[Signature]
CHIEF, DEPT. OF TRANSPORTATION



COUNTY OF SACRAMENTO
MUNICIPAL SERVICES

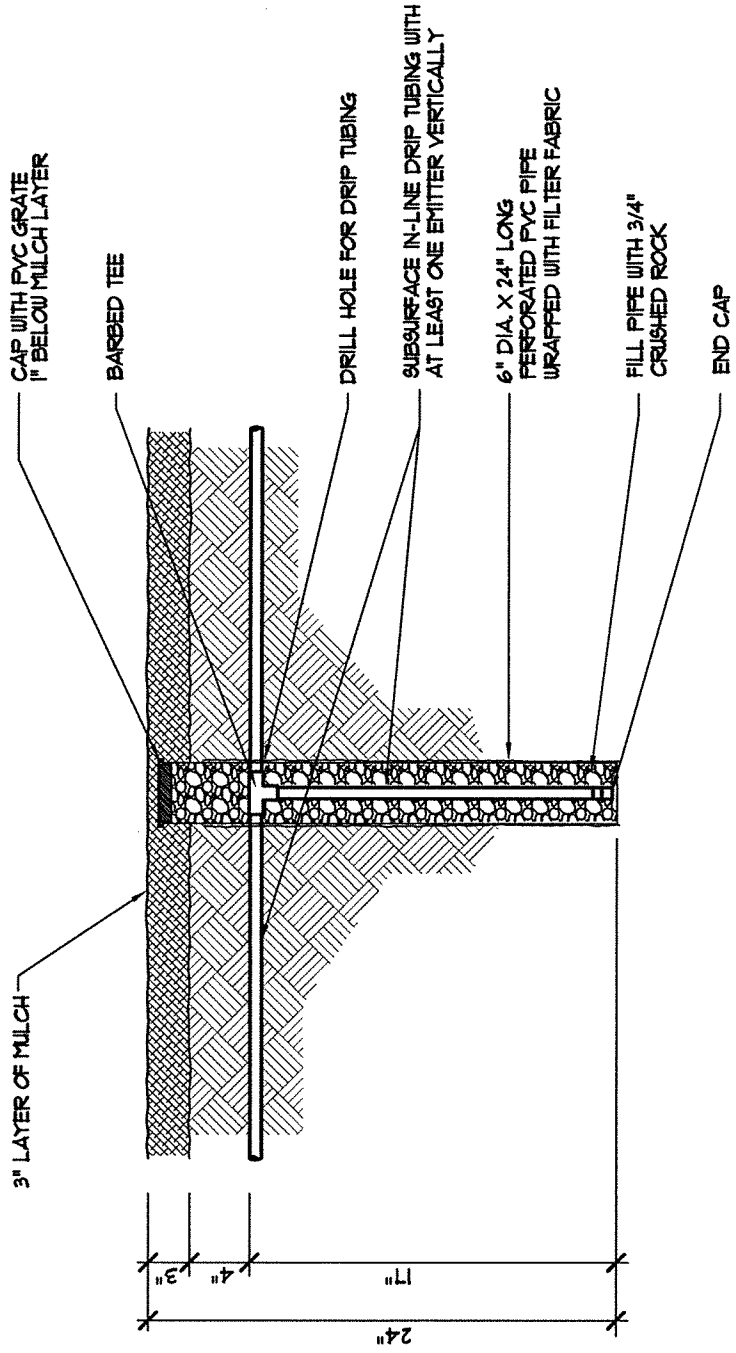
**SUBSURFACE IN-LINE DRIP
IRRIGATION END-FEED
SUPPLY MANIFOLD**

SCALE: NONE
DATE: 11/2000

DRAWN BY: CA
CHECKED BY: GMM

SHEET:
L-17

CHIEF, DEPT. OF TRANSPORTATION



COUNTY OF SACRAMENTO
MUNICIPAL SERVICES

**DEEP WATERING PIPE
FOR TREES**

SCALE: NONE	DRAWN BY: TRU P.	SHEET: L-18
DATE: 11/2013	CHECKED BY: HY	

[Signature]
CHIEF, DEPT. OF TRANSPORTATION

CONTROLLER ENCLOSURE AS SPECIFIED

3/4" WATERPROOF MARINE PLYWOOD ATTACHED TO BACK OF ENCLOSURE WITH WING-NUTS (SIZE AS REQUIRED). OMIT IF PRE-FABRICATED MOUNTING HARDWARE IS INCLUDED WITH ENCLOSURE.

PROVIDE 12" LOOP FOR SLACK

ENCLOSURE SHALL BE MOUNTED ON A 6" THICK CONCRETE BASE. BASE SHALL EXTEND 6" FROM EACH SIDE OF ENCLOSURE & 36" IN FRONT

IRRIGATION CONTROLLER

RAIN SHUT OFF WITH VANDAL RESISTANT ENCLOSURE (WHEN SPECIFIED)

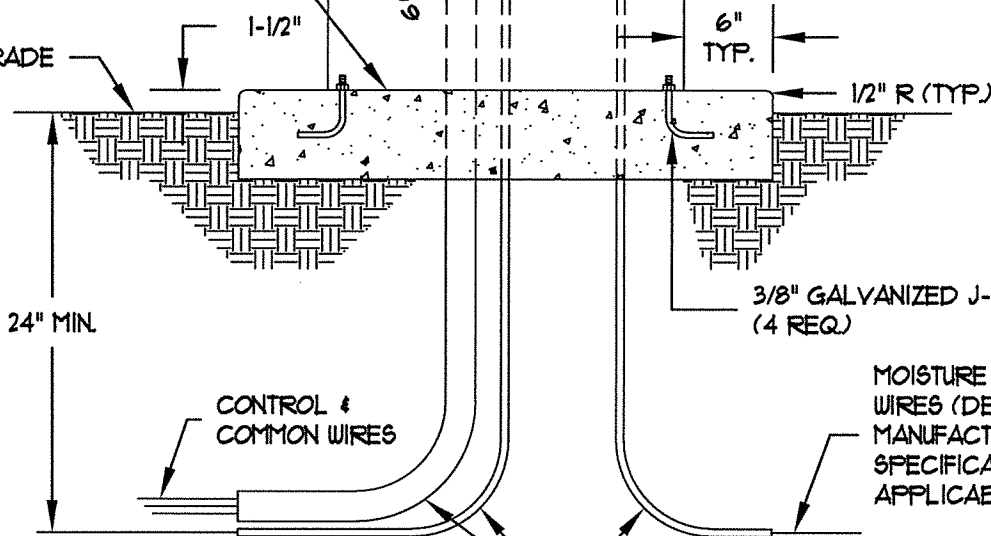
MOISTURE SENSOR CONTROL PANEL (WHEN SPECIFIED)

FLEX CONDUIT FOR 120V, LENGTH AS REQUIRED

WATERPROOF GFI PROTECTED 120V DUPLEX BOX W/ RECEPTACLE & ON/OFF SWITCH

PEDESTAL (WHEN SPECIFIED)

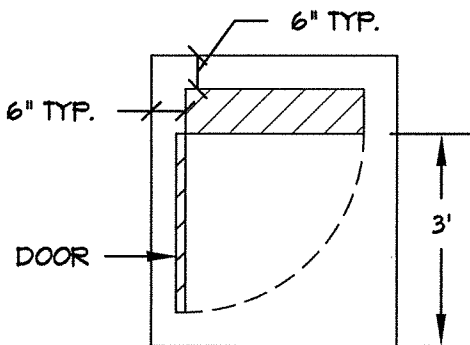
FINISH GRADE



1-1/4" CONDUIT W/ 3 #14 TW CONDUCTORS FROM 120V SERVICE

SCH 80 PVC SWEEP ELLS

MOISTURE SENSOR WIRES (DEPTH PER MANUFACTURER'S SPECIFICATIONS), IF APPLICABLE



PLAN VIEW

[Signature]
CHIEF, DEPT. OF TRANSPORTATION

COUNTY OF SACRAMENTO
MUNICIPAL SERVICES

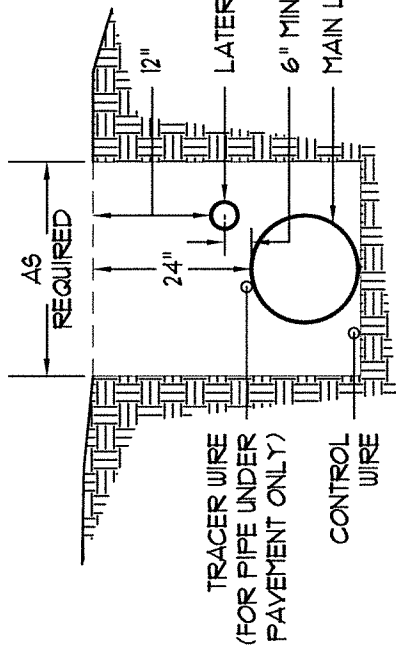
**IRRIGATION CONTROLLER
ENCLOSURE**

SCALE: NONE
DATE: 11/2000

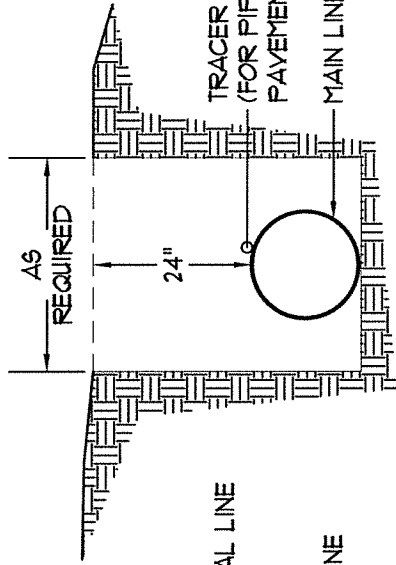
DRAWN BY: GA
CHECKED BY: GMM

SHEET:
L-19

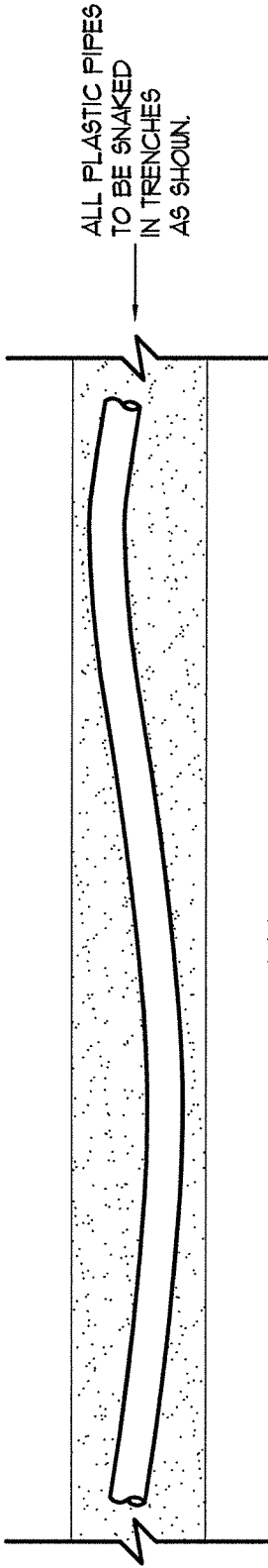
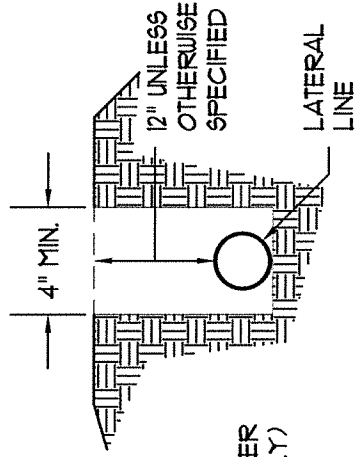
MAIN SUPPLY, LATERAL,
CONTROL WIRE & TRACER WIRE



MAIN SUPPLY



PLASTIC LATERAL



PLAN

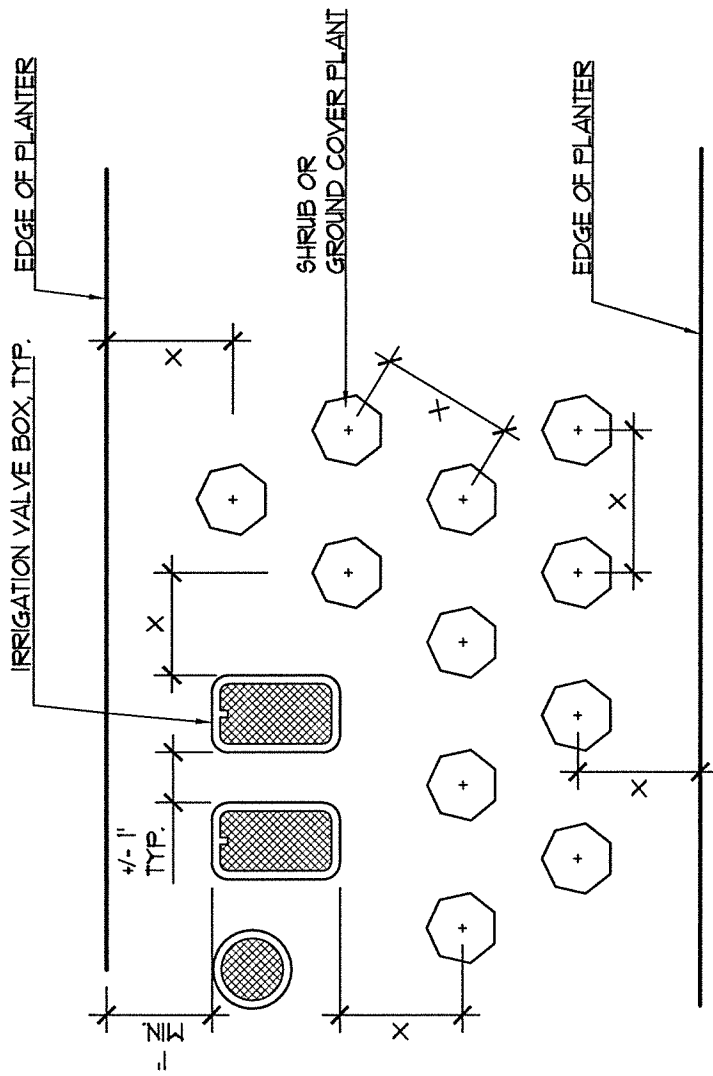
[Signature]
CHIEF, DEPT. OF TRANSPORTATION

COUNTY OF SACRAMENTO
MUNICIPAL SERVICES

**IRRIGATION SYSTEM
TRENCHING**

- NOTES:
1. ALL TRENCH DEPTHS ARE MEASURED FROM WITHIN TOP OF FINISH GRADE.
 2. TRACER WIRE SHALL BE REQUIRED ONLY WHEN PIPES ARE INSTALLED UNDER PAVEMENT.
 3. ALL PIPE TO BE INSTALLED IN ACCORDANCE WITH MANUFACTURER'S INSTALLATION SPECIFICATIONS.
 4. IF SPRINKLER HEAD AND NIPPLE HEIGHT EXCEED 18", LATERAL LINE DEPTH SHALL BE 18".
 5. INSTALL PIPE BEDDING UNDER PIPING, WHEN SPECIFIED.
 6. INSTALL SLEEVING UNDER PAVING PER PLANS.

SCALE: NONE	DRAWN BY: CA	SHEET:
DATE: 11/2000	CHECKED BY: GMM	L-20



NOTES:

'X' VALUE SHALL BE SPACING INDICATED ON PLANTING PLAN. LAYOUT TRIANGULAR SPACING TYPICAL, UNLESS OTHERWISE SHOWN OR NOTED.

OFFSETS FOR IRRIGATION BOXES ARE INTENDED AS A GENERAL GUIDE FOR INSTALLATION.

CLEARANCES AROUND IRRIGATION EQUIPMENT MAY BE GREATER THAN 'X' DEPENDING UPON SPRINKLER/ DRIP SYSTEM LAYOUT AND ACTUAL FIELD CONDITIONS.

CLEARANCES FOR IRRIGATION AND PLANTING AROUND UTILITIES MAY VARY AND SHALL BE VERIFIED BY CONTRACTOR PRIOR TO INSTALLATION.

COUNTY OF SACRAMENTO
MUNICIPAL SERVICES

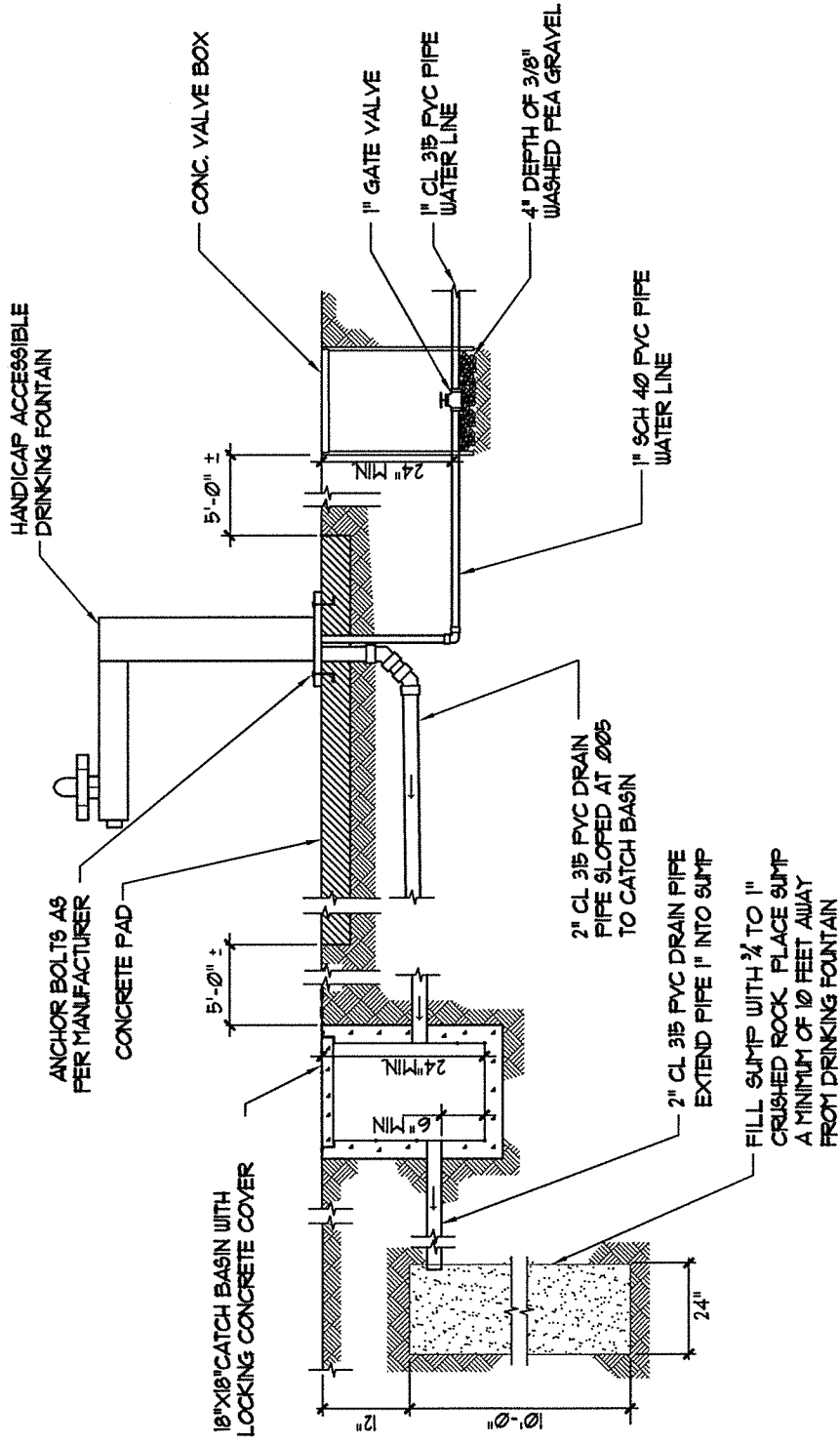
**VALVE BOX/PLANTING
LAYOUT**

SCALE: NONE
DATE: 11/2013

DRAWN BY: HY/HMA
CHECKED BY: HY

SHEET:
L-21

[Signature]
CHIEF, DEPT. OF TRANSPORTATION

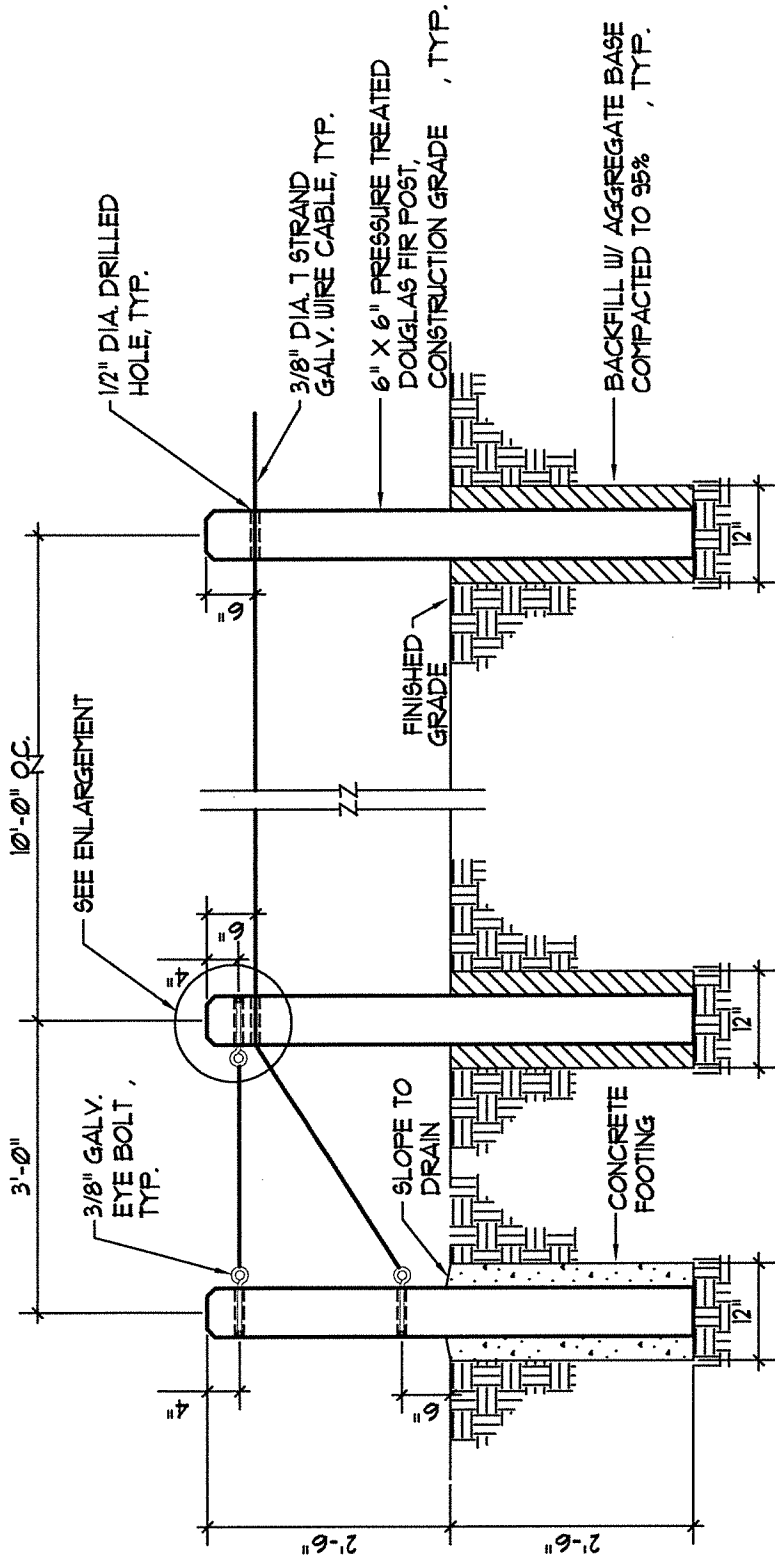


COUNTY OF SACRAMENTO
MUNICIPAL SERVICES

DRINKING FOUNTAIN

SCALE: NONE
DATE: 11/2013
DRAWN BY: TP/HY
CHECKED BY: GMM/HY
SHEET: L-22

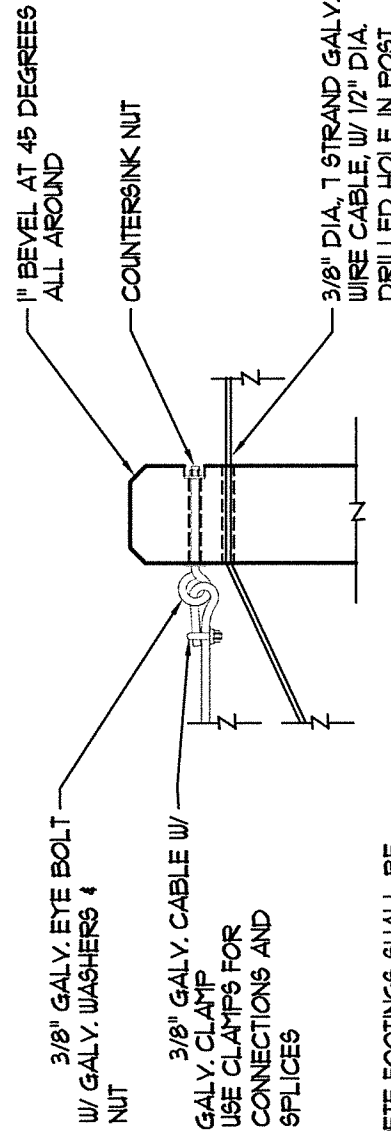
[Signature]
CHIEF, DEPT. OF TRANSPORTATION



TERMINAL POST

SCALE: 1/2" = 1'-0"

LINE POST



ENLARGEMENT
SCALE: 1" = 1'-0"

NOTE: CONCRETE FOOTINGS SHALL BE INSTALLED AT ALL TERMINAL POSTS AND AT ALL BENDS.

[Signature]
CHIEF, DEPT. OF TRANSPORTATION

COUNTY OF SACRAMENTO MUNICIPAL SERVICES	
POST AND CABLE FENCING	
SCALE: NONE	SHEET: L-23
DATE: 11/2000	DRAWN BY: GMM
	CHECKED BY: GMM

5'-0" CLEARANCE MAX
OR AS SPECIFIED ON PLAN

3/16" STEEL PLATE WELDED
TO TUBE AND GROUND SMOOTH

2-1/2" X 2-1/2" STEEL TUBE
3/16" THICK, PAINTED WITH
2 COATS OF PRIMER
AND INSIGNIA YELLOW

FINISH SURFACE

CONCRETE FOOTING

TOP OF
PAVING

STATIONARY BOLLARD

WELD A 1/4"
THICK STEEL
PLATE TO
TOP OF TUBE

WELD A 4" WIDE
BY 1/4" THICK
STEEL PLATE
TO TUBE, TYP.

ENLARGEMENT A

1/4" REBAR WELDED
LOOP FOR LOCK
1" DIAMETER

1/4" THICK STEEL
PLATE WELDED TO
TUBE

1/2" THICK STEEL PLATE
WITH 1/2" R CORNERS
WITH 7/16" HOLE

ENLARGEMENT B

2-1/4" RUBBER HIGH PRESSURE HOSE SECURED
TO STEEL TUBE WITH A 1/4" HEX BOLT, WASHER,
& NUT

2-1/2" X 2-1/2" STEEL TUBE, 3/16" THICK
PAINT WITH 2 COATS OF PRIMER AND YELLOW PAINT

DRILL 5/8" DIA. HOLE WITH 1/2" DIA. HEX HEAD
BOLT FOR SWIVEL. TACK WELD BOTH SIDES OF BOLT

SEE ENLARGEMENT A

3" X 4" X 1/6" LONG, 3/16" THICK STEEL
TUBING. PAINT ABOVE GROUND PORTION.

PAVING

1/4 REBAR WELDED TO TUBING, BOTH SIDES

CONCRETE FOOTING

KNOCK-DOWN BOLLARD
FRONT VIEW

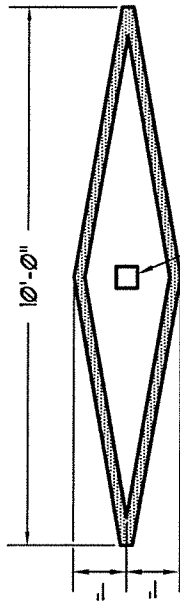
SWIVEL

STREET SIDE

SEE ENLARGEMENT B

1/2" HEX BOLT, WASHER
& NUT. TACK WELD BOTH
SIDES OF BOLT. DRILL 5/8"
DIA. HOLE THRU POST
AND SLEEVE

KNOCK-DOWN BOLLARD
SIDE VIEW



BOLLARD
4" YELLOW STRIPE
BOLLARD STRIPING
IF REQUIRED

CHIEF, DEPT. OF TRANSPORTATION

COUNTY OF SACRAMENTO
MUNICIPAL SERVICES

**KNOCK-DOWN BOLLARD
& STATIONARY BOLLARD**

SCALE: NONE
DATE: 11/2000

SHEET:
L-24

DRAWN BY: GMM
CHECKED BY: GMM

[Signature]

3/16" STEEL PLATE WELDED
TO POST & GROUND SMOOTH

2-1/2" DIA. GALVANIZED
STEEL POST. PAINTED WITH
2 COATS OF PRIMER
AND INSIGNIA YELLOW

3/4" DIA. STEEL PIN W/ HEAD
W/ 3/8" DIA. HOLE FOR
LOCK

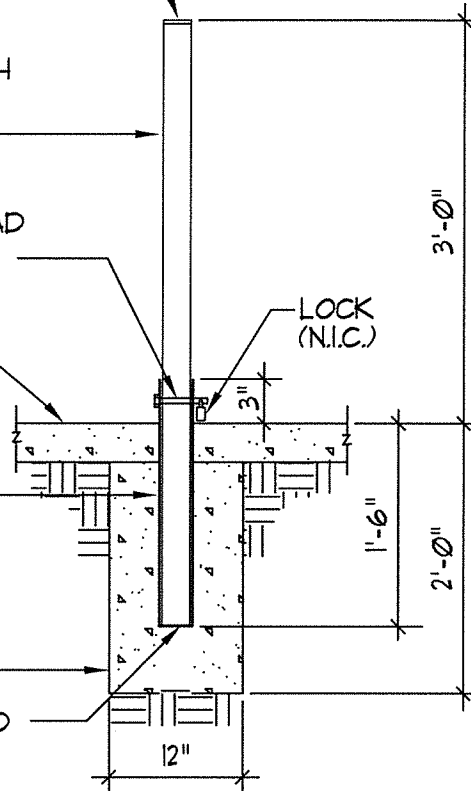
FINISH SURFACE

LOCK
(N.I.C.)

3" DIA. GALVANIZED
STEEL PIPE SLEEVE
(PAINT ABOVE GROUND
PORTION SAME AS POST)

CONCRETE FOOTING

3/16" STEEL PLATE WELDED
TO SLEEVE



NOTE: DRILL A 13/16" DIA. HOLE THRU
BOTH THE POST AND SLEEVE FOR
PIN PLACEMENT.

CHIEF, DEPT. OF TRANSPORTATION

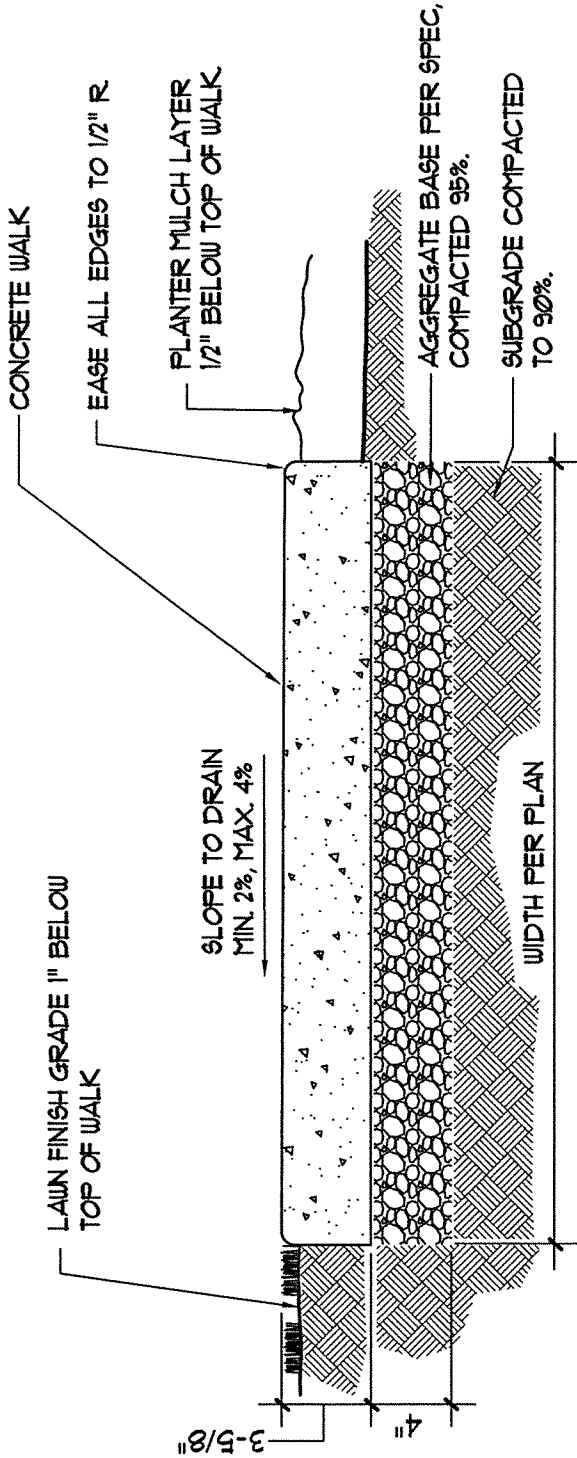
COUNTY OF SACRAMENTO
MUNICIPAL SERVICES

REMOVABLE BOLLARD

SCALE: NONE
DATE: 11/2000

DRAWN BY: GMM
CHECKED BY: GMM

SHEET:
L-25



NOTES:

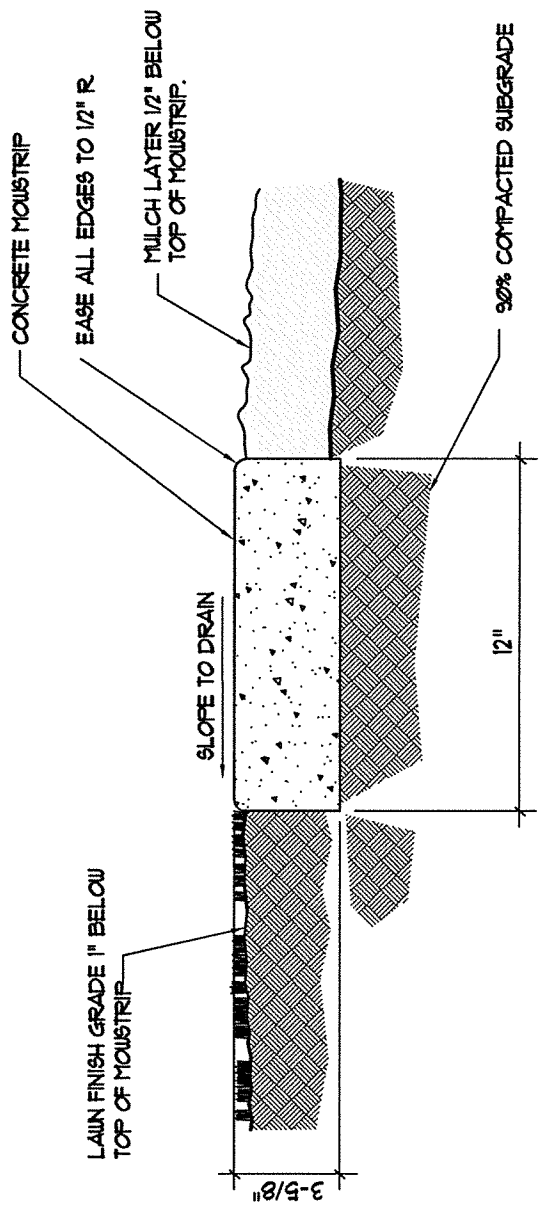
1. PROVIDE 1" DEEP SCORE JOINTS AT 10'-0" ON CENTER
2. PROVIDE EXPANSION JOINTS AT 20'-0" INTERVALS.
3. USE CLASS "B" CONCRETE, TYP.
4. MEDIUM BROOM FINISH PERPENDICULAR TO WALK EDGE,
UNLESS OTHERWISE SPECIFIED.
5. PROVIDE FULL DEPTH FELT EXPANSION JOINTS WHEN ABUTTING WALKS,
WALLS AND BUILDINGS.

COUNTY OF SACRAMENTO
MUNICIPAL SERVICES

CONCRETE WALK

SCALE: NONE	DRAWN BY: TP/HY	SHEET:
DATE: 11/2013	CHECKED BY: HY	L-26

CHIEF, DEPT. OF TRANSPORTATION



NOTES:

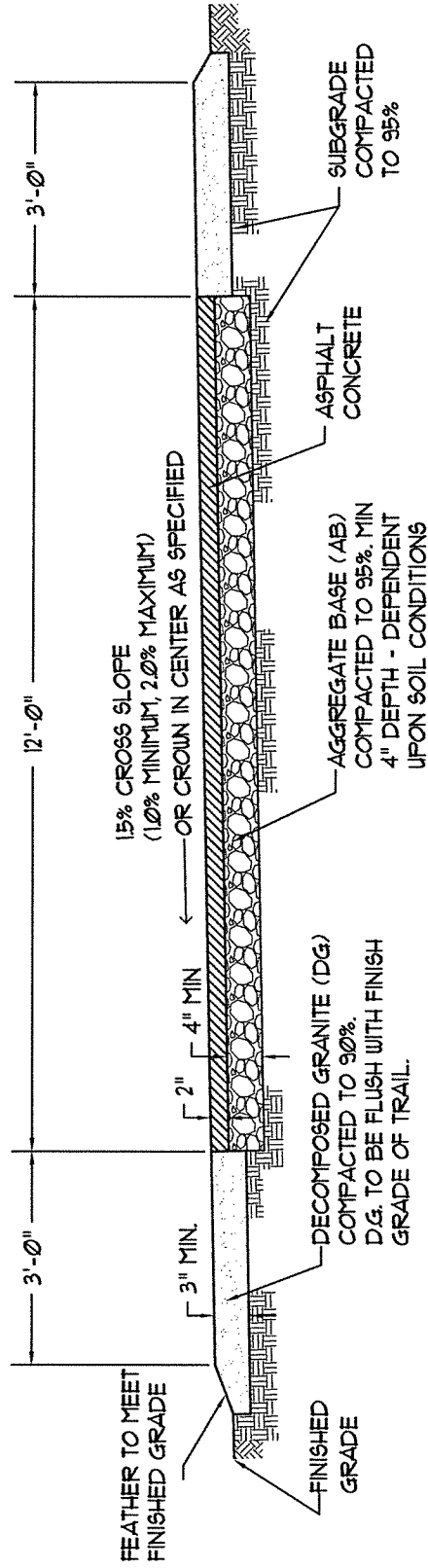
1. PROVIDE 1" DEEP SCORE JOINTS AT 10'-0" ON CENTER.
2. PROVIDE EXPANSION JOINTS AT 20'-0" INTERVALS AND AT CHANGES OF DIRECTION ALONG CURVILINEAR FORMS.
3. USE CLASS "B" CONCRETE, TYP.
4. MEDIUM BROOM FINISH UNLESS OTHERWISE SPECIFIED.
5. PROVIDE FULL DEPTH FELT EXPANSION JOINTS WHEN ABUTTING WALKS, WALLS AND BUILDINGS.

COUNTY OF SACRAMENTO
MUNICIPAL SERVICES

CONCRETE MOWSTRIP

SCALE: NONE	DRAWN BY: TRU P.	SHEET: L-27
DATE: 11/2013	CHECKED BY: HY	

[Signature]
CHIEF, DEPT. OF TRANSPORTATION



NOTES:

1. APPLY PRE-EMERGENT HERBICIDE TO ANY EXPOSED SUBGRADE UNDER D.G. PRIOR TO INSTALLING IT.
2. APPLY PRE-EMERGENT HERBICIDE TO AGGREGATE BASE PRIOR TO PAVING ASPHALT.
3. APPLY A 4" WIDE SOLID YELLOW CENTERLINE STRIPE CONTINUOUSLY DOWN THE CENTER OF THE BIKE TRAIL.
4. OTHER DIRECTIONAL AND INFORMATIONAL PAVEMENT MARKING MUST FOLLOW CALTRANS STANDARDS.
5. DEPTH OF AB AND DG MAY REQUIRE GREATER DEPTHS IN ACCORDANCE WITH SOILS ANALYSIS.

COUNTY OF SACRAMENTO
MUNICIPAL SERVICES

**BIKE TRAIL
PAVING SECTION**

CHIEF, DEPT. OF TRANSPORTATION

SCALE: NONE
DATE: 01/2010

DRAWN BY: STAFF
CHECKED BY: GK

SHEET:
L-28

MEDIAN PAVING- REFER TO CONSTRUCTION PLANS

COMPACTED SUB-BASE MATERIAL - REFER TO CONSTRUCTION PLANS

ROOT CONTROL BARRIER

EXCAVATE MEDIANS 24" BELOW TOP OF EXISTING PAVEMENT. REMOVE ALL AC, AB, AND SUBGRADE.

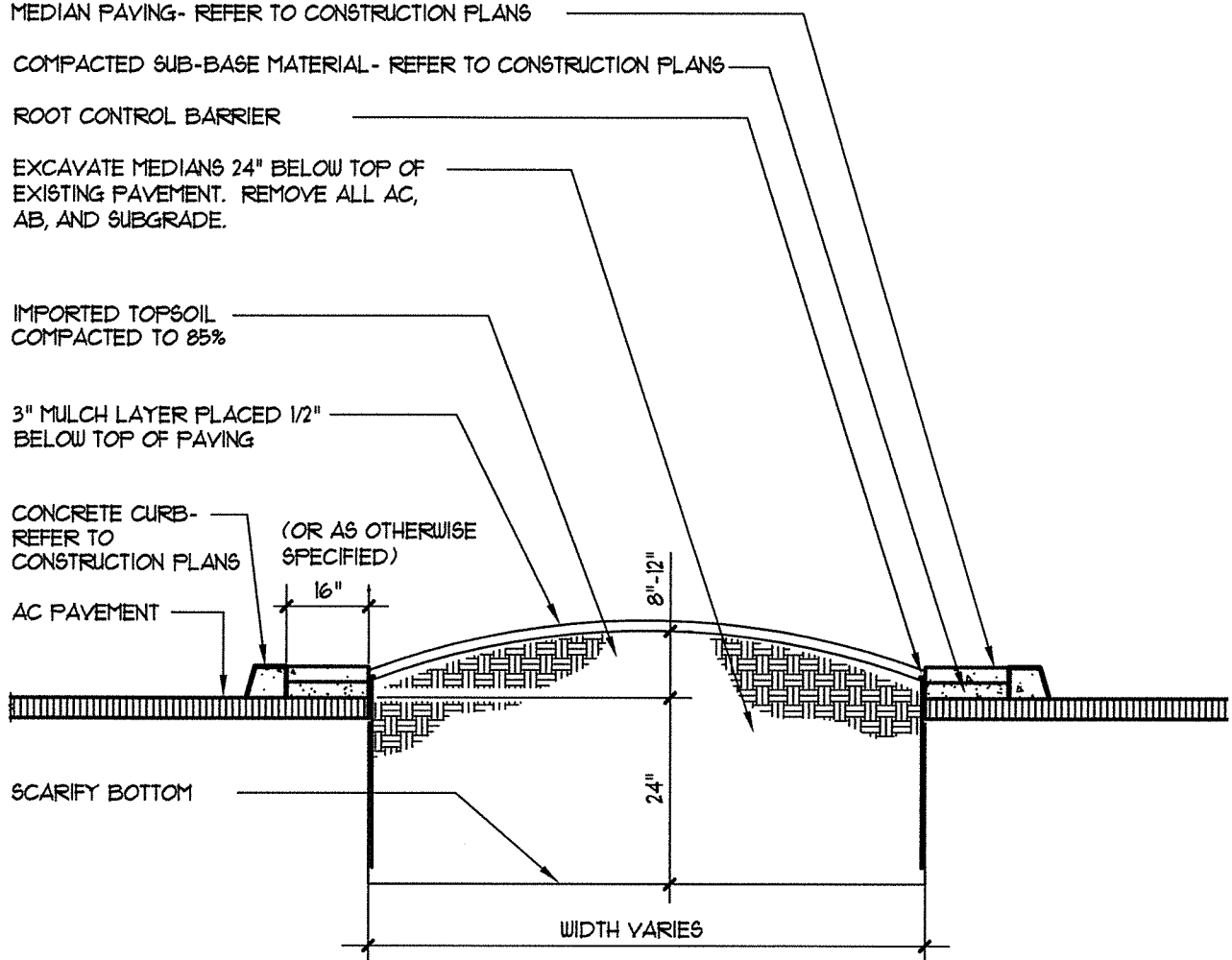
IMPORTED TOPSOIL COMPACTED TO 85%

3" MULCH LAYER PLACED 1/2" BELOW TOP OF PAVING

CONCRETE CURB- REFER TO CONSTRUCTION PLANS (OR AS OTHERWISE SPECIFIED)

AC PAVEMENT

SCARIFY BOTTOM



NOTE: CONTOUR OF MEDIAN WILL VARY DEPENDING UPON MEDIAN WIDTH. DO NOT EXCEED BID QUANTITY OF IMPORTED TOPSOIL TO ACHIEVE 12" HEIGHT.

CHIEF, DEPT. OF TRANSPORTATION

COUNTY OF SACRAMENTO
MUNICIPAL SERVICES

**ROADWAY MEDIAN
SECTION**

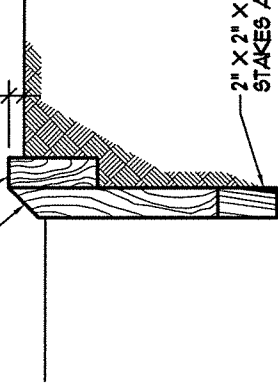
SCALE: NONE
DATE: 11/2013

DRAWN BY: SLN/HY
CHECKED BY: HY

SHEET:
L-29

2" x 6" HEADERBOARD

45°



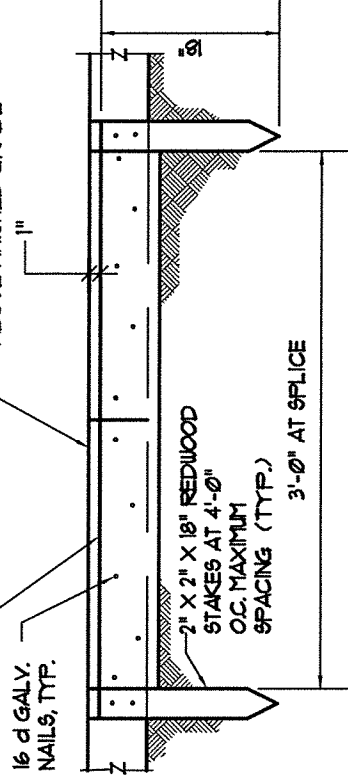
2" X 2" X 18" REDWOOD STAKES AT 4'-0" O.C.

SECTION

2" X 4" REDWOOD AT SPLICE

16 d GALV. NAILS, TYP.

2" X 6" REDWOOD HEADERBOARD PLACE TOP OF HEADERBOARD 1" ABOVE FINISHED GRADE



SPLICE DETAIL

2" X 6" HEADERBOARD

(4) 1/4" TO 3/8" X 4" REDWOOD BENDERBOARD STAGGER SPLICE JOINTS APART 3'-0" MINIMUM

REDWOOD STAKE

PLAN VIEW

PLACE TOP OF BENDERBOARD 1" ABOVE FINISHED GRADE

FINISHED GRADE

16d GALV. NAIL, 12" O.C. TYP.

1/4" TO 3/8" X 4" REDWOOD BENDERBOARD SPLICE FOUR (4) TOGETHER

1" X 2" X 12" LONG REDWOOD STAKE, TYP.

4'-0" O.C. MAXIMUM SPACING

SIDE VIEW

1/4" TO 3/8" X 4" BENDERBOARD

NOTES:

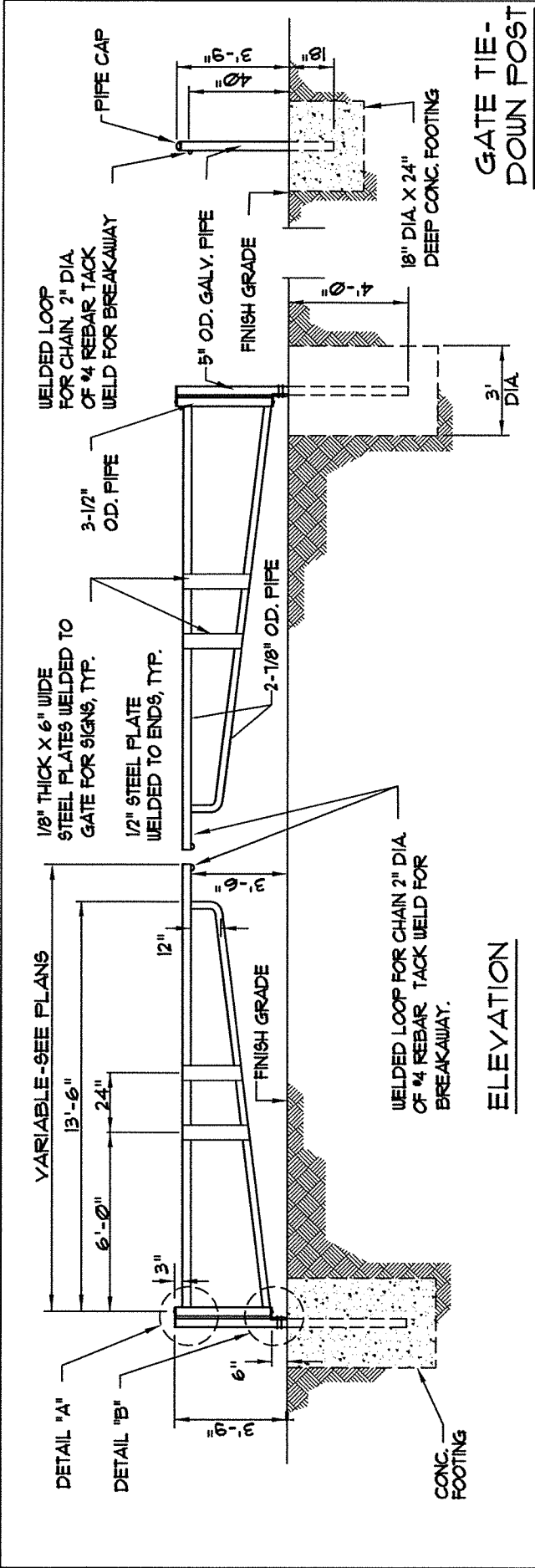
1. INSTALL ALL STAKES AND SPLICES ON PLANTING SIDE OF HEADERBOARD.
2. ALL NAILS SHALL BE GALVANIZED.
3. ALL REDWOOD SHALL BE ROUGH CONSTRUCTION COMMON GRADE IN ACCORDANCE TO CALIFORNIA REDWOOD ASSOCIATION GRADING RULES.
4. DRIVE STAKES TO RESISTANCE AND CUT TOP AT 45 DEGREE ANGLE.

COUNTY OF SACRAMENTO
MUNICIPAL SERVICES

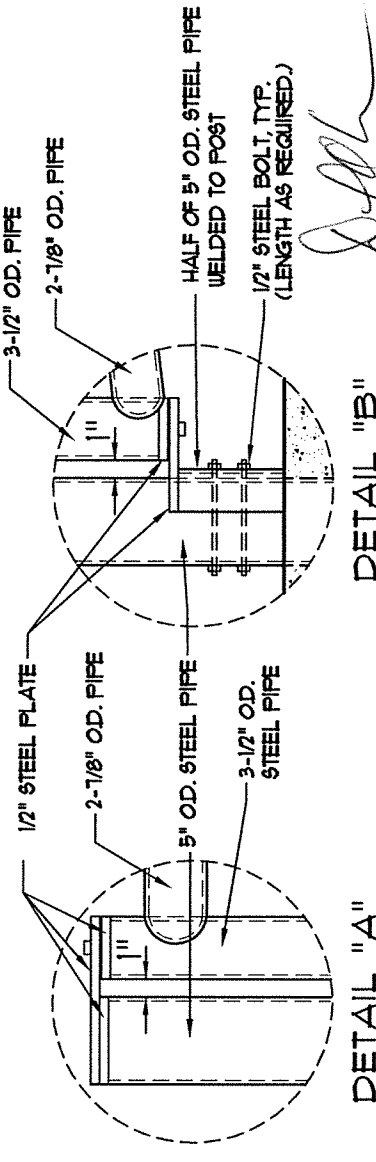
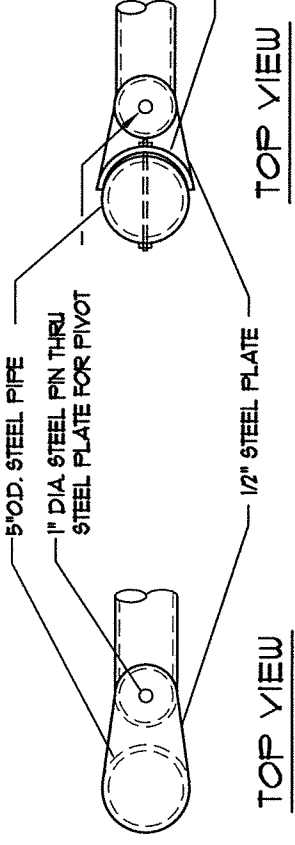
REDWOOD HEADERBOARD

SCALE: NONE DATE: 11/2000	DRAWN BY: TRU P. CHECKED BY: GMM	SHEET: L-30
------------------------------	-------------------------------------	----------------

[Signature]
CHIEF, DEPT. OF TRANSPORTATION



ELEVATION

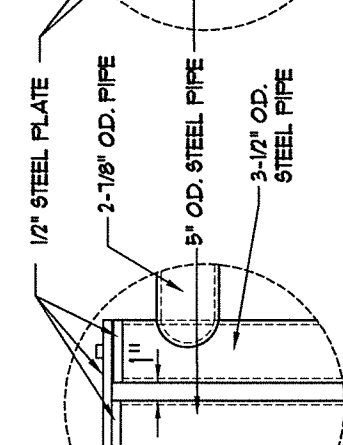
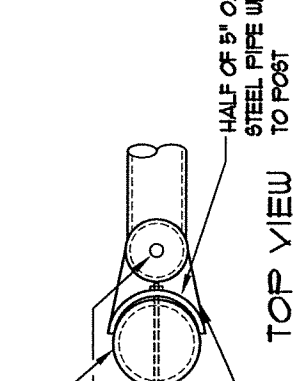
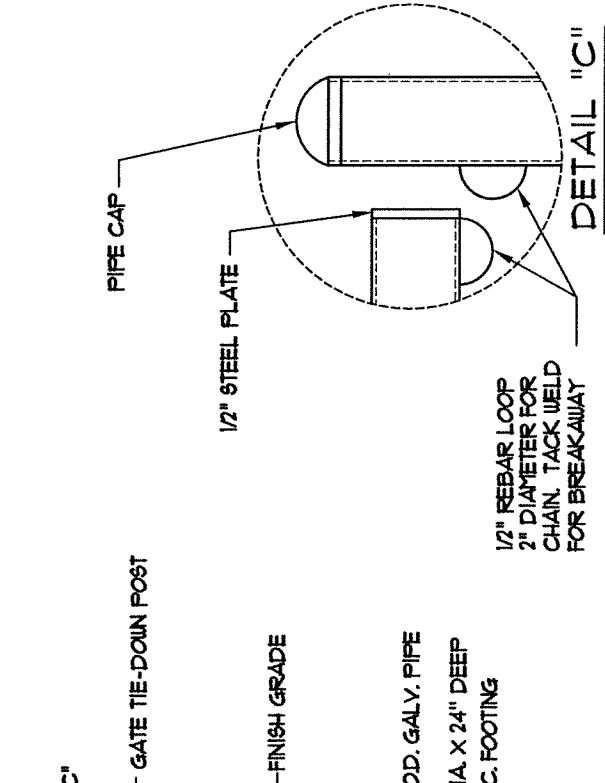


NOTES:

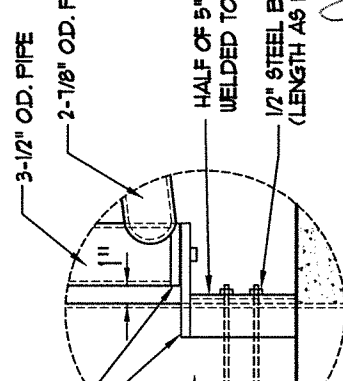
1. ALL PIPES SHALL BE BLACK STEEL PIPES, OUTSIDE DIA. (OD.) AND WELDED.
2. ALL STEEL TO BE PAINTED WITH 2 COATS OF PRIMER AND INSIGNIA YELLOW.
3. PROVIDE 2-5" O.D. PIPE AND INSTALL WITH CONC. FOOTING (18" X 24" D.) FOR TIE-DOWN WHEN GATE IS OPENED AND CLOSED.

COUNTY OF SACRAMENTO MUNICIPAL SERVICES		SHEET: L-31
DOUBLE PIPE GATE		
SCALE: NONE	DRAWN BY: TRU P.	
DATE: 11/2000	CHECKED BY: MIKE M.	

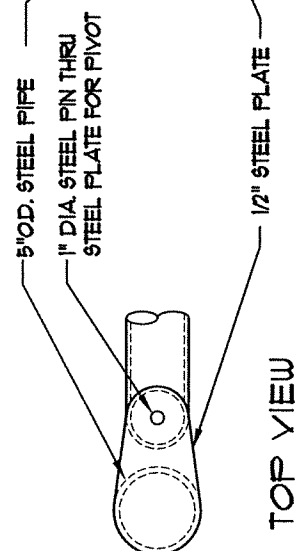
CHIEF, DEPT. OF TRANSPORTATION



DETAIL "A"



DETAIL "B"



DETAIL "C"

1/2" REBAR LOOP
2" DIAMETER FOR
CHAIN. TACK WELD
FOR BREAKAWAY

NOTES:

1. ALL PIPES SHALL BE BLACK STEEL PIPES. OUTSIDE DIA. (OD) AND WELDED.
2. ALL STEEL TO BE PAINTED WITH 2 COATS OF PRIMER AND INSIGNIA YELLOW.
3. PROVIDE 2-5" OD. PIPE AND INSTALL WITH CONC. FOOTING (18"X24" D.) FOR TIE-DOWN WHEN GATE IS OPENED AND CLOSED.

COUNTY OF SACRAMENTO
MUNICIPAL SERVICES

SINGLE PIPE GATE

SCALE: NONE	DRAWN BY: TRU P.	SHEET: L-32
DATE: 11/2000	CHECKED BY: GMM	

[Signature]
CHIEF, DEPT. OF TRANSPORTATION